

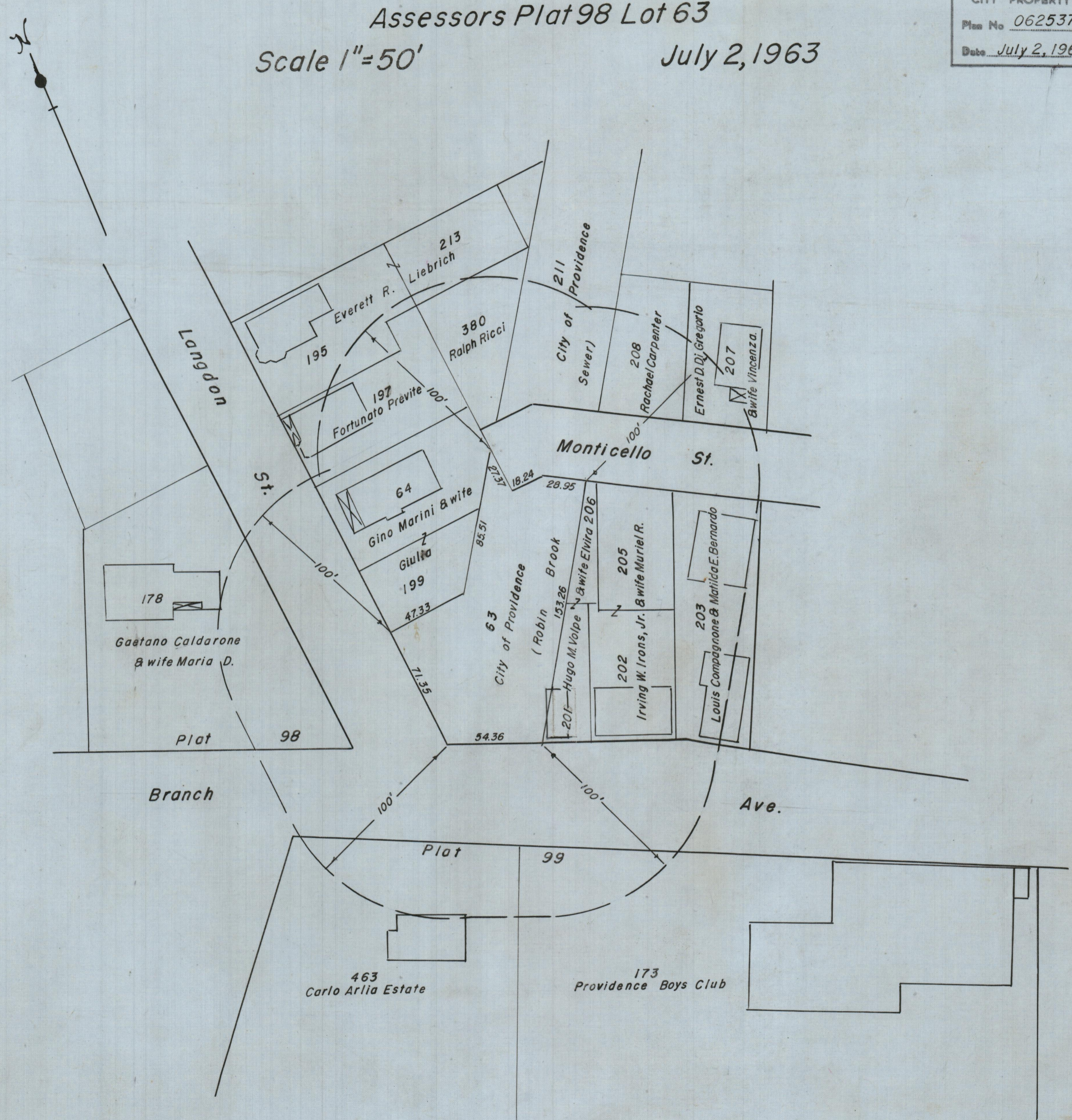
# Radius Plot Plan

## Assessors Plat 98 Lot 63

Scale 1"=50'

July 2, 1963

PROVIDENCE, R. I.  
P. W. DEPT. - ENGINEERING OFFICE  
CITY PROPERTY SECTION  
Plan No. 062537  
Date July 2, 1963



Lot numbers from Assessor's Plats 98 & 99.

CITY OF PROVIDENCE, R. I.  
Public Works Dept. - Engineering Office  
Showing Radius Plot Plan for lot  
63 on Assessor's Plat 98.  
Drawn by E.A.K. Checked by L.P.R.  
Scale 1"=50' Date July 2, 1963  
Corrected by [Signature] Associate Eng.  
Approved Robert W. Thony  
CHIEF ENGINEER