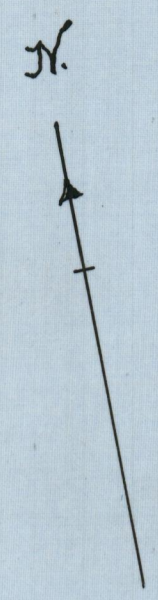
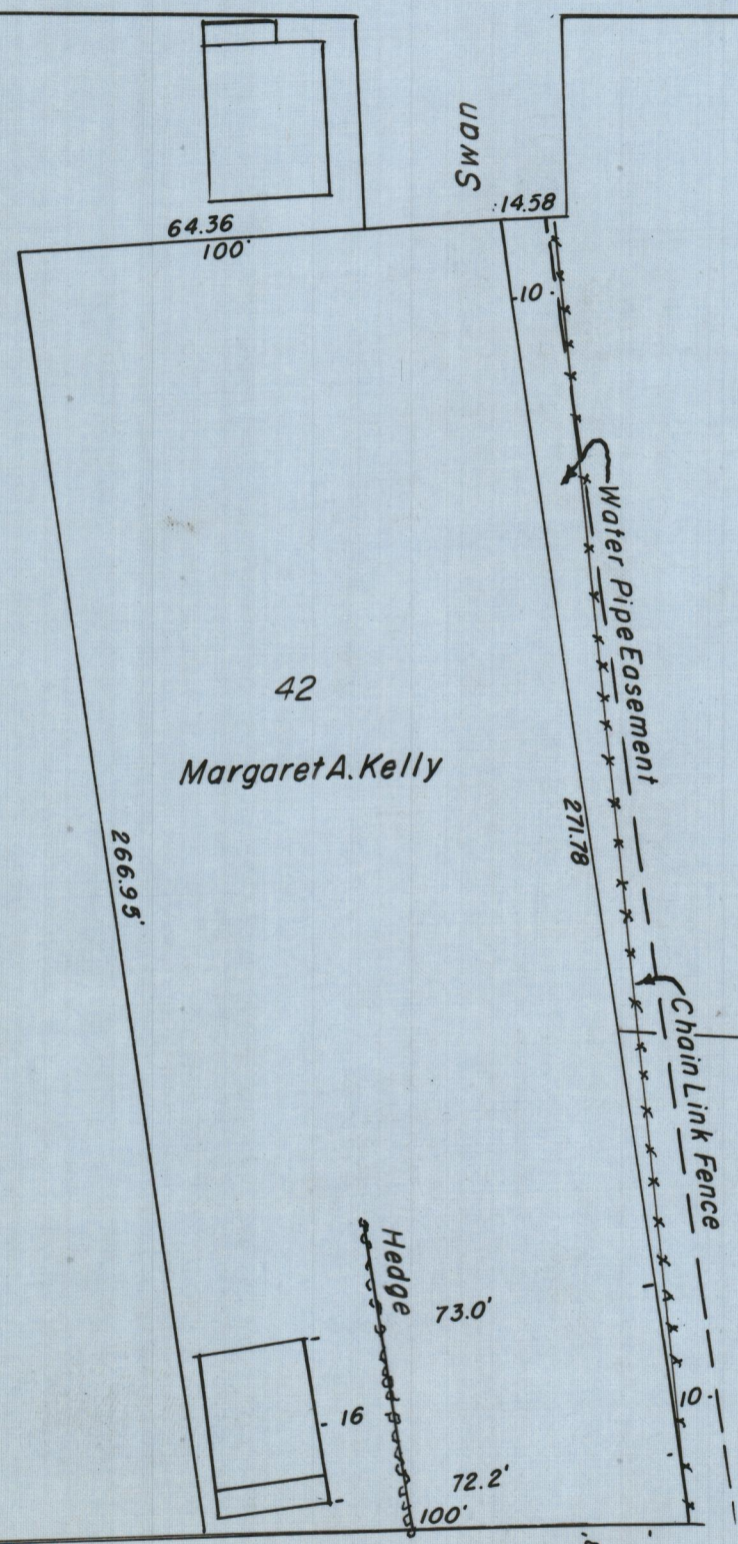
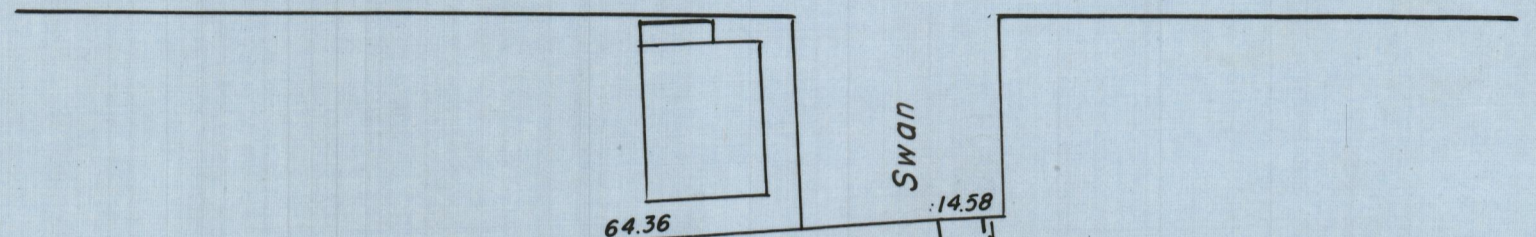


PROVIDENCE, R. I.  
 P. W. DEPT. - ENGINEERING OFFICE  
 CITY PROPERTY SECTION  
 Plan No. 062001  
 Date Feb. 23, 1960

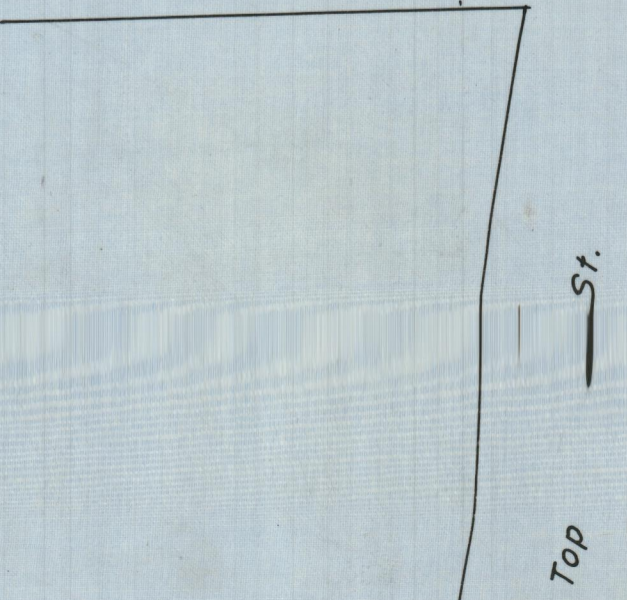
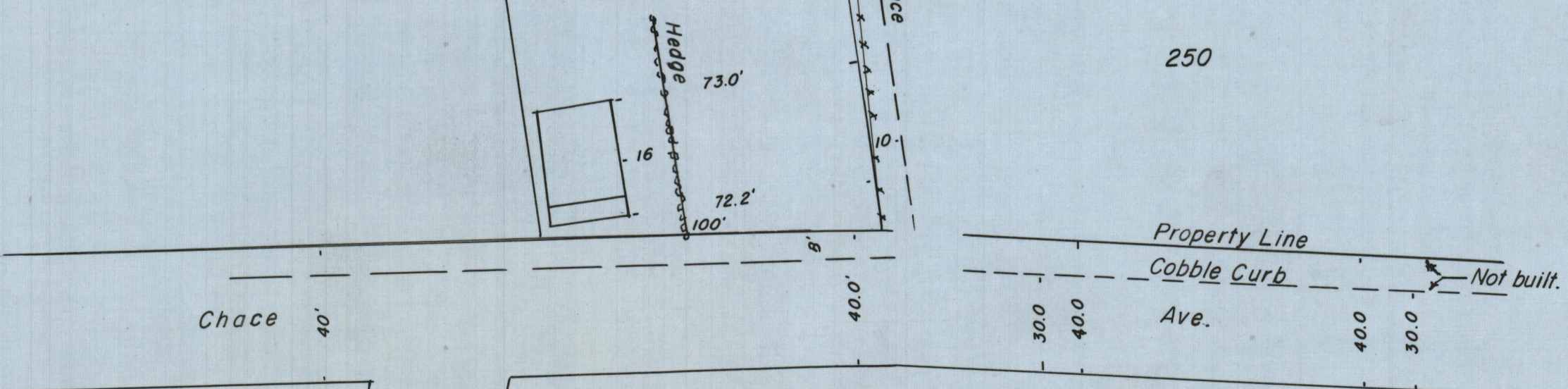


Hillside Ave.  
 St.



3  
 Jewish Home for the Aged of Rhode Island

*Superseded*



CITY OF PROVIDENCE, R. I.  
 Public Works Dept. - Engineering Office  
 Showing Water Pipe Easement  
 between Chace Ave. & Swan St.  
 Drawn by E. A. K. Checked by J. P.  
 Scale 1" = 40' Date Feb. 3, 1960  
 Correct \_\_\_\_\_ Associate \_\_\_\_\_  
 Approved \_\_\_\_\_ CHIEF ENGINEER

PK.  
 960  
 Engr.