

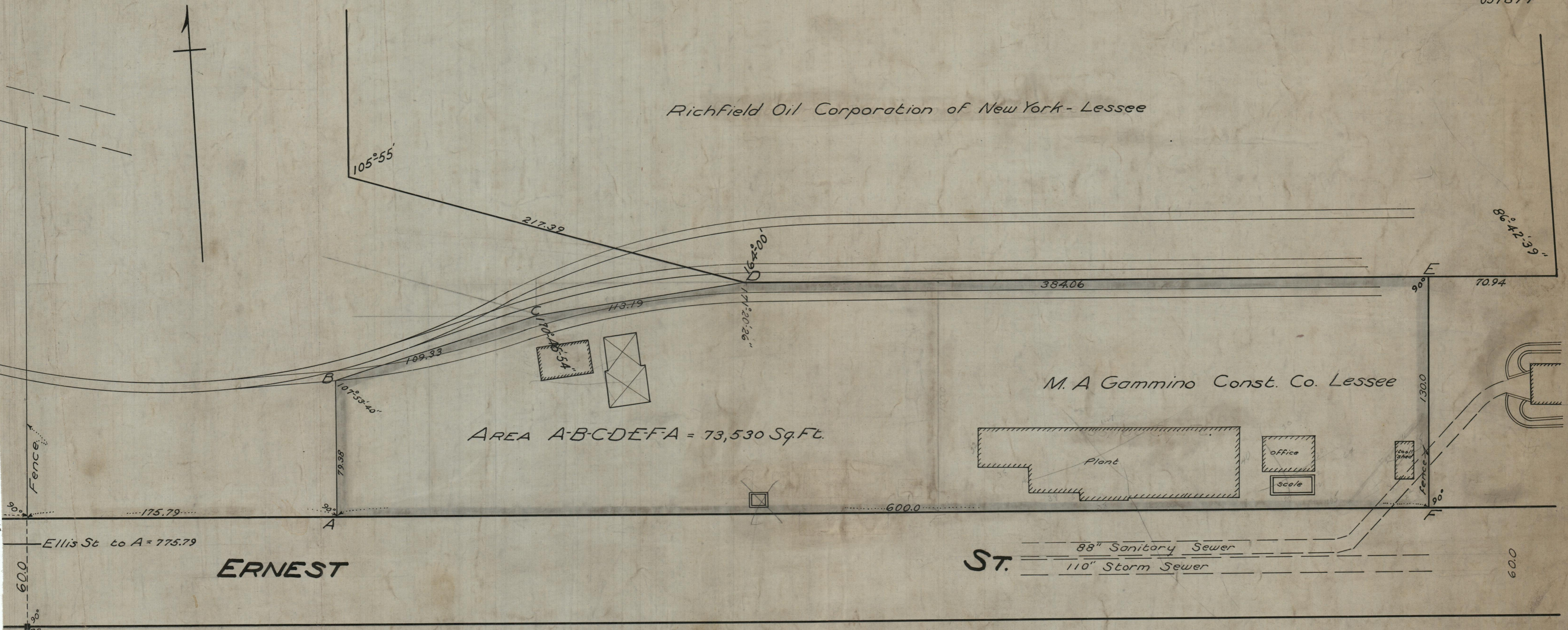
Richfield Oil Corporation of New York - Lessee

M. A. Gammino Const. Co. Lessee

AREA A-B-C-D-E-F-A = 73,530 Sq. Ft.

ERNEST

ST.



CITY OF PROVIDENCE
 ENGINEERING DEPARTMENT
 Showing Ext. of lease M.A. GAMMINO
 at Field Point
 Drawn by BRACEY Checked by Brennan
 Scale 1"=40' Date 11/22/38
 Corrected by [Signature] Asst. Eng.
 Approved by Frank [Signature] City Eng.