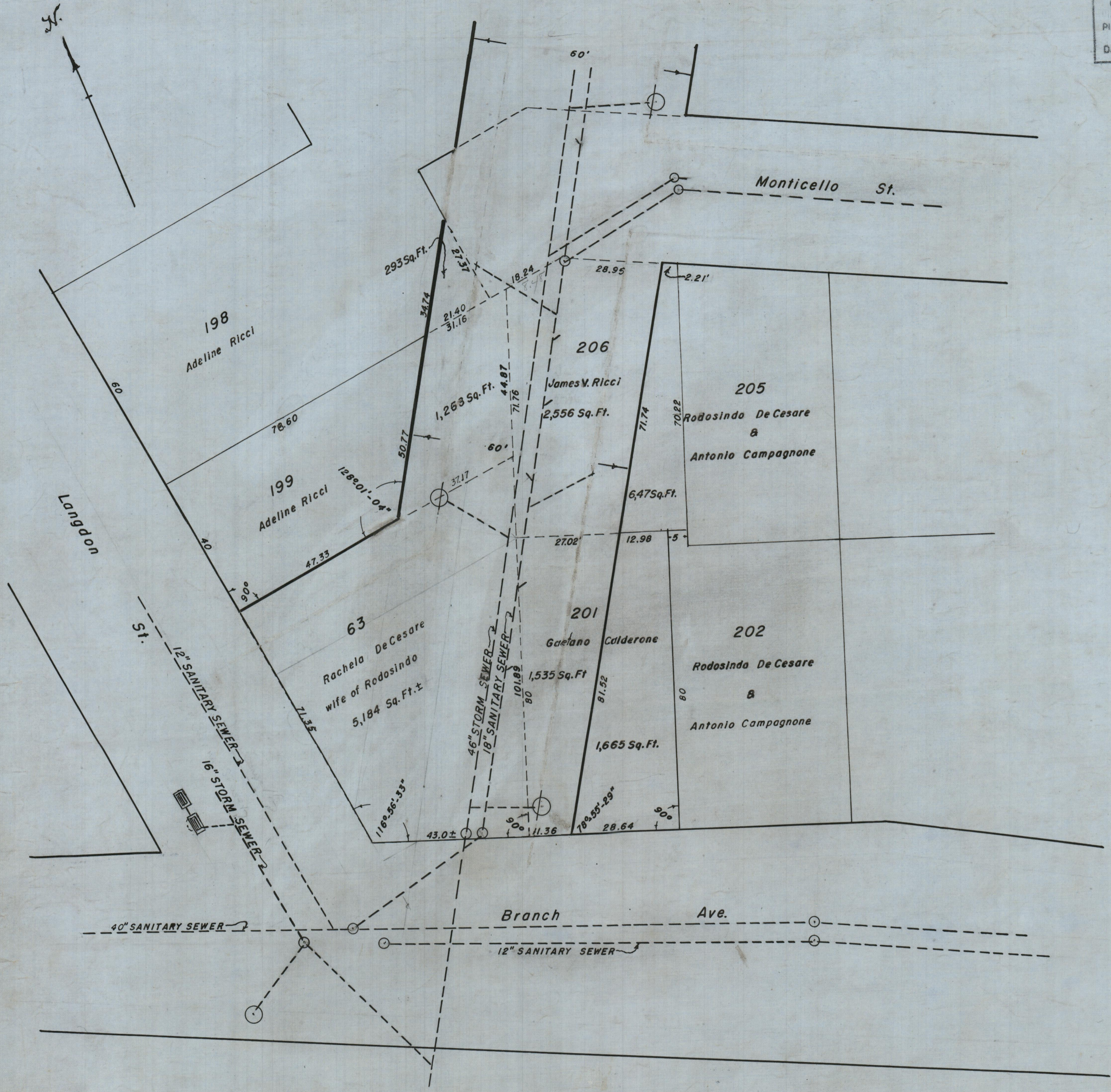


PROVIDENCE, R. I.  
 P. W. DEPT. - ENGINEERING OFFICE  
 CITY PROPERTY SECTION  
 Plan No. 061286  
 Date Oct. 6, 1955



Lot numbers from Assessor's Plat 98 as of 1926.

Owners' names from Condemnation Plat dated May 4, 1926.

CITY OF PROVIDENCE, R. I.  
 Public Works Dept. - Engineering Office  
 Showing **Robin Brook Condemnation**  
**Portion at Branch Ave.**  
 Drawn by E.A.K. Checked by W.L.B.  
 Scale 1" = 20' Date 10-6-55  
 Corrected by *William L. Bagley* Associate Engr.  
 Approved *Gilbert Small* CHIEF ENGINEER