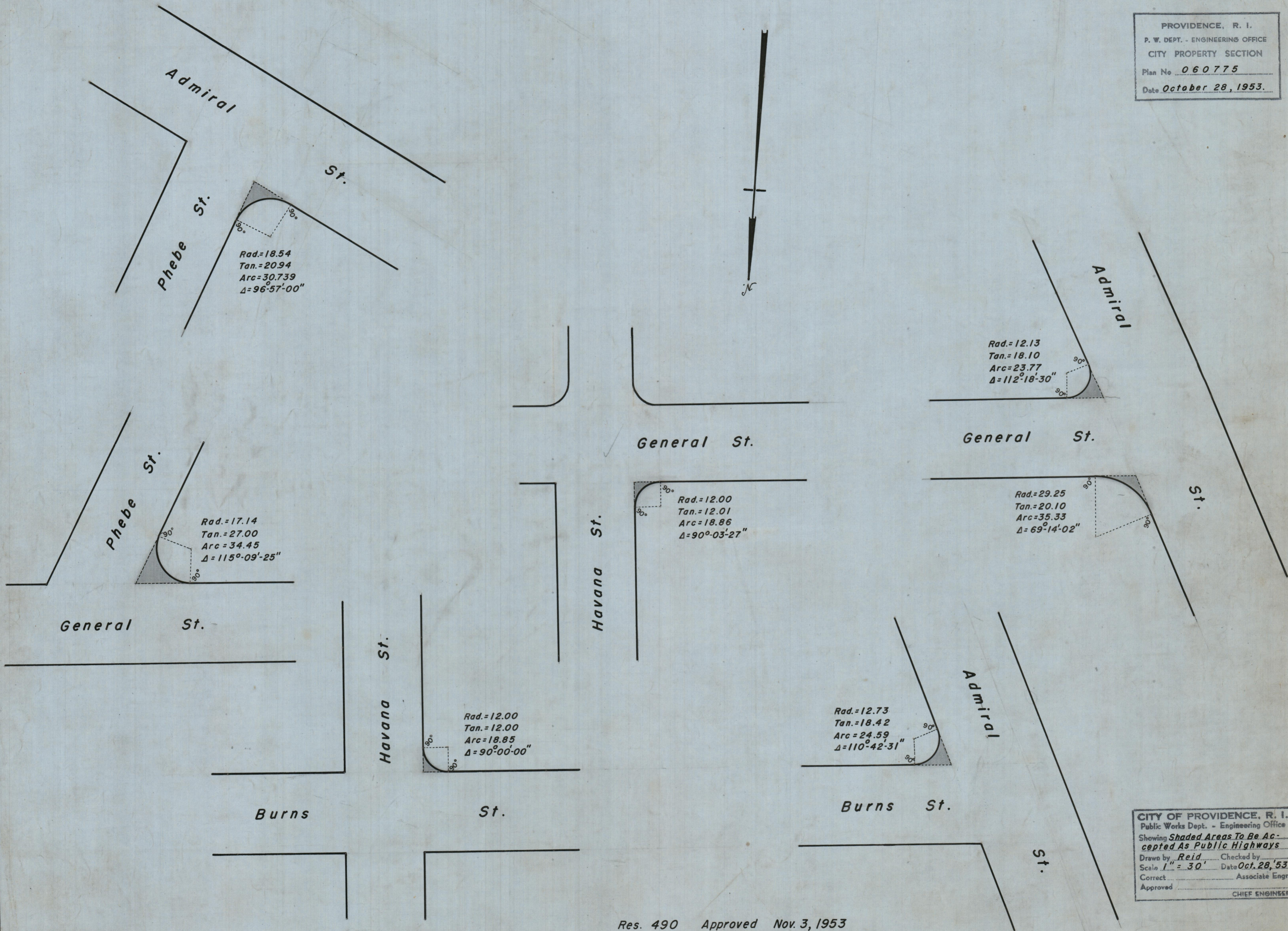


PROVIDENCE, R. I.  
 P. W. DEPT. - ENGINEERING OFFICE  
 CITY PROPERTY SECTION  
 Plan No. 060775  
 Date October 28, 1953.



CITY OF PROVIDENCE, R. I.  
 Public Works Dept. - Engineering Office  
 Showing Shaded Areas To Be Accepted As Public Highways  
 Drawn by Reid, Checked by \_\_\_\_\_  
 Scale 1" = 30', Date Oct. 28, 53  
 Correct \_\_\_\_\_ Associate Engr.  
 Approved \_\_\_\_\_ CHIEF ENGINEER

Res. 490 Approved Nov. 3, 1953