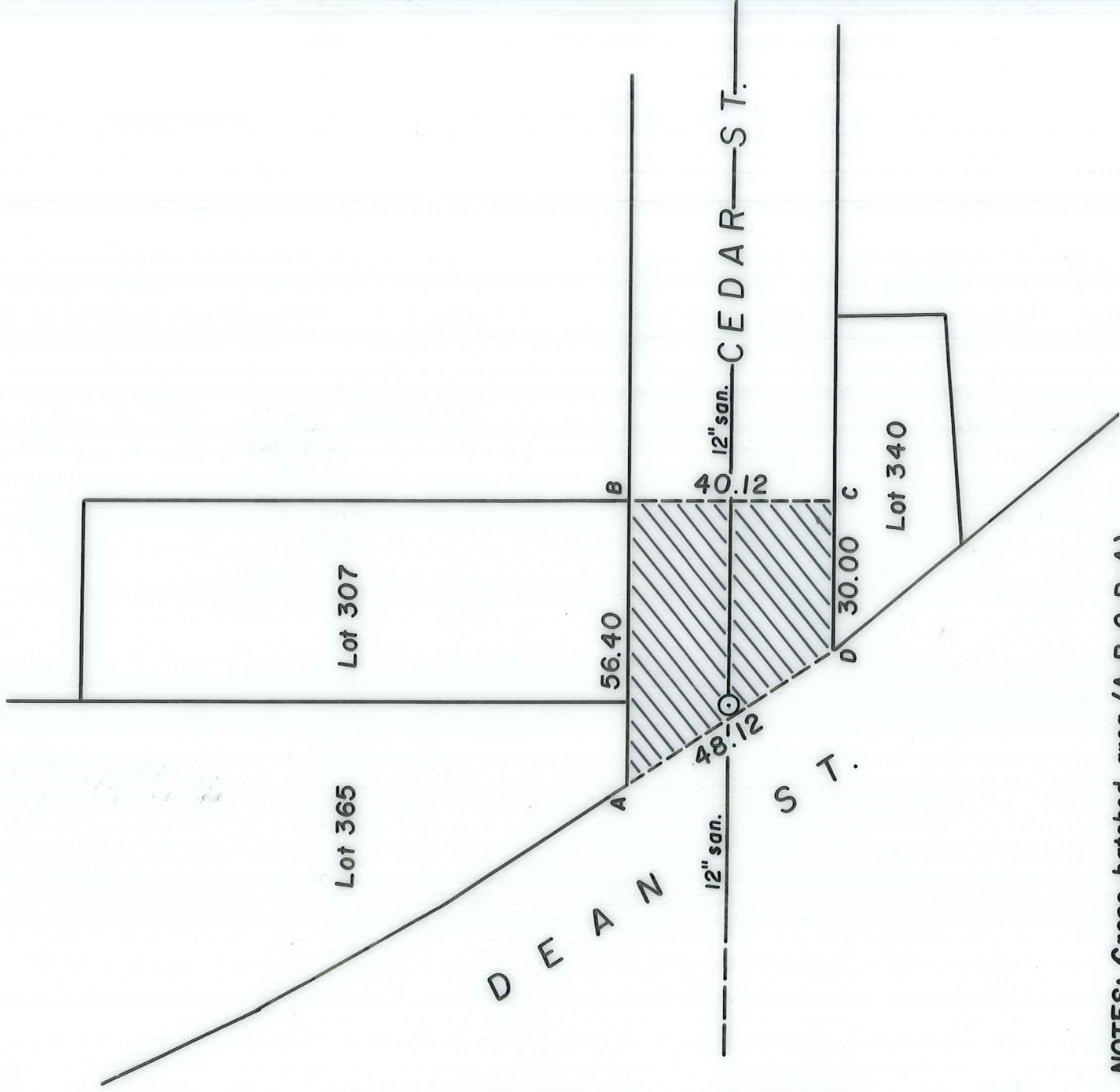


C.C.R. #584 APP. 9-15-2000



PROVIDENCE, R. I.
 P. W. DEPT. - ENGINEERING OFFICE
 STREET LINE SECTION
 Plan No. 064655
 Date 5-24-2000



NOTES: Cross-hatched area (A-B-C-D-A) indicates proposed abandonment.
 Full sewer easement will be required.
 Total square footage = 1,733.00±

CITY OF PROVIDENCE, R. I.
 Public Works Dept. - Engineering Office
 Showing Proposed abandonment of a portion of Cedar St.
 Drawn by A. Zisiades Checked by _____
 Scale 1" = 30' Date 5-24-2000
 Correct JLL Associate Eng. _____
 Approved [Signature] CHIEF ENGINEER

Lot numbers taken from A.P. 26.