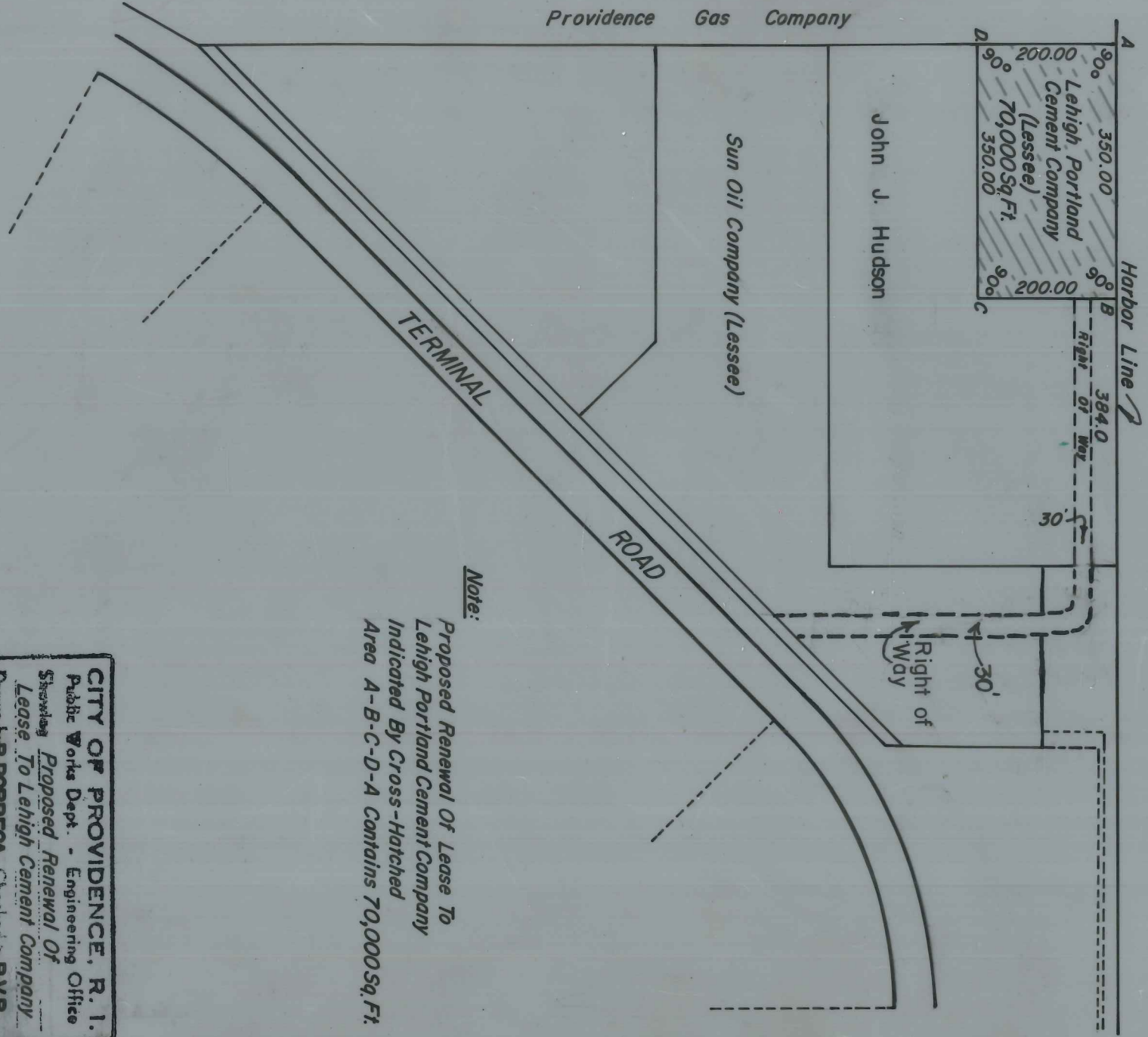


PROVIDENCE, R. I.  
 P. B. DEPT. - ENGINEERING OFFICE  
 CITY PROPERTY SECTION  
 Plot No. 064495  
 Date JULY 29, 1990



PROVIDENCE RIVER



Note:  
 Proposed Renewal Of Lease To  
 Lehigh Portland Cement Company  
 Indicated By Cross-Hatched  
 Area A-B-C-D-A Contains 70,000 Sq. Ft.

**CITY OF PROVIDENCE, R. I.**  
 Public Works Dept. - Engineering Office  
 Showing Proposed Renewal Of  
 Lease To Lehigh Cement Company  
 Drawn by **B. PORRECA** Checked by **R.V.R.**  
 Scale 1" = 200' Date July 29, 1990  
 Correct *[Signature]* Associate Engineer  
 Approved *[Signature]* P. E.  
 CIVIL ENGINEER

768  
 M-57