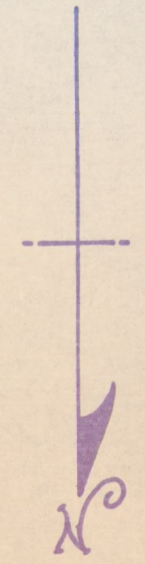
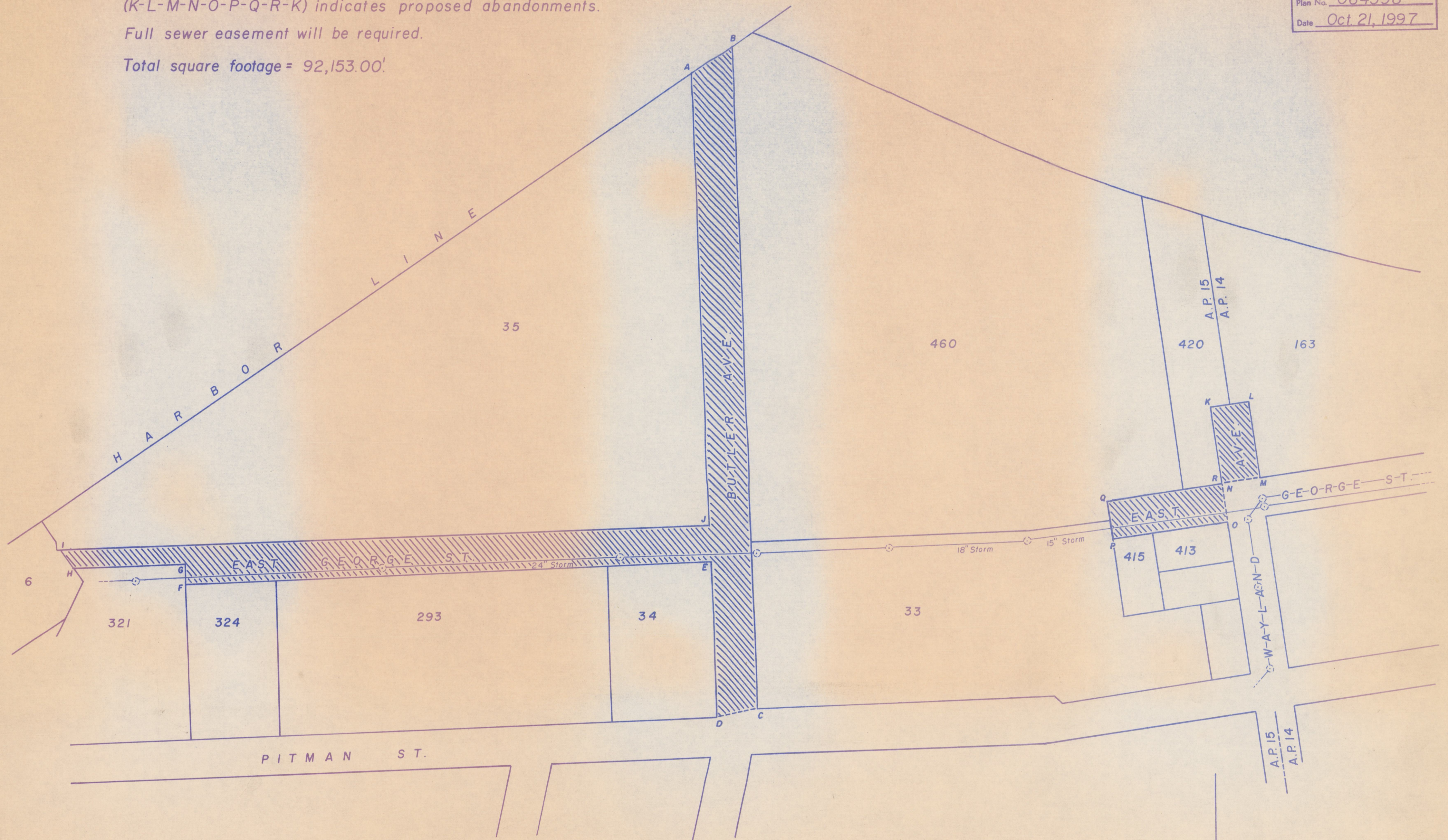


PROVIDENCE, R. I.
 P. W. DEPT. - ENGINEERING OFFICE
 STREET LINE SECTION
 Plan No. 064598
 Date Oct. 21, 1997

NOTES: Cross-hatched areas (A-B-C-D-E-F-G-H-I-J-A) and
 (K-L-M-N-O-P-Q-R-K) indicates proposed abandonments.
 Full sewer easement will be required.
 Total square footage = 92,153.00'



CITY OF PROVIDENCE, R. I.
 Public Works Dept. - Engineering Office
 Showing proposed abandonments: East
 George, Wayland Ave. & Butler Ave.
 Drawn by A. Zisades Checked by J.T.M.
 Scale 1" = 80' Date 10-21-97
 Corrected by [Signature] Associate Engr.

Lot Numbers Taken From A.P. 14 & 15.