

**STATEMENT
 PLAT
 OF
 LAND CONDEMNED**

PURSUANT TO THE PROVISIONS OF CHAPTER 2118 OF THE PUBLIC LAWS ENTITLED, "AN ACT RELATING TO THE TAKING OF LAND IN THE CITIES OF PROVIDENCE AND PAWTUCKET FOR HIGHWAY PURPOSES," PASSED BY THE GENERAL ASSEMBLY AT ITS JANUARY SESSION A.D. 1921, AND BY AND IN ACCORDANCE WITH THE JOINT RESOLUTION OF THE CITY COUNCIL OF THE CITY OF PROVIDENCE NUMBERED 351 APPROVED SEPTEMBER 9, 1929 CONDEMNING CERTAIN LAND FOR HIGHWAY PURPOSES.

NOTE
 Shaded Portions Condemned for Highway Purposes.
 Parcels Condemned in Fee Simple Designated by
 A, a, b, c, d, B - e, f, D, C - H, j, I. - h, i, g - U, T, m.

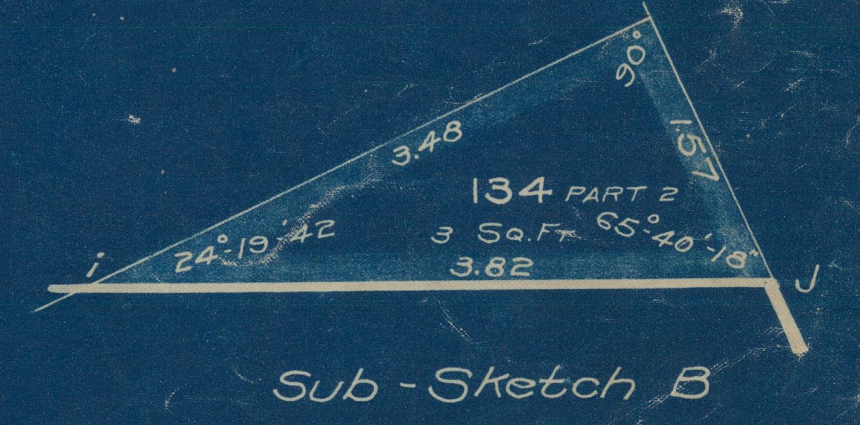


LOT	OWNERS
8	PROV. ENGINEERING CORP.
9	EDWARD F. CAHILL
10	" " "
102	FULLER IRON WORKS
105	WILLIAM McLAUGHLIN
106	" " "
107	ABRAHAM COHEN
108	ISIDOR SHECHTMAN

LOT	OWNERS
109	ISIDOR SHECHTMAN
110	ISIDOR SHECHTMAN
111	REBECCA COHEN
112	CHARLES L. WEAVER
116	WILLIAM McLAUGHLIN
117	ISIDOR SHECHTMAN ET UX IDA
134	EUGENE S. GRAVES
144	JOHN A. GLEDHILL

Lot numbers on this plan correspond to lot numbers on Assessors' Plat No. 18.

Note: The North Line of the New Street is Straight from Point F on 051671 to Point H on this Plat.



Note The names of the owners are given to aid in identifying the parcels of land without admitting title in persons named