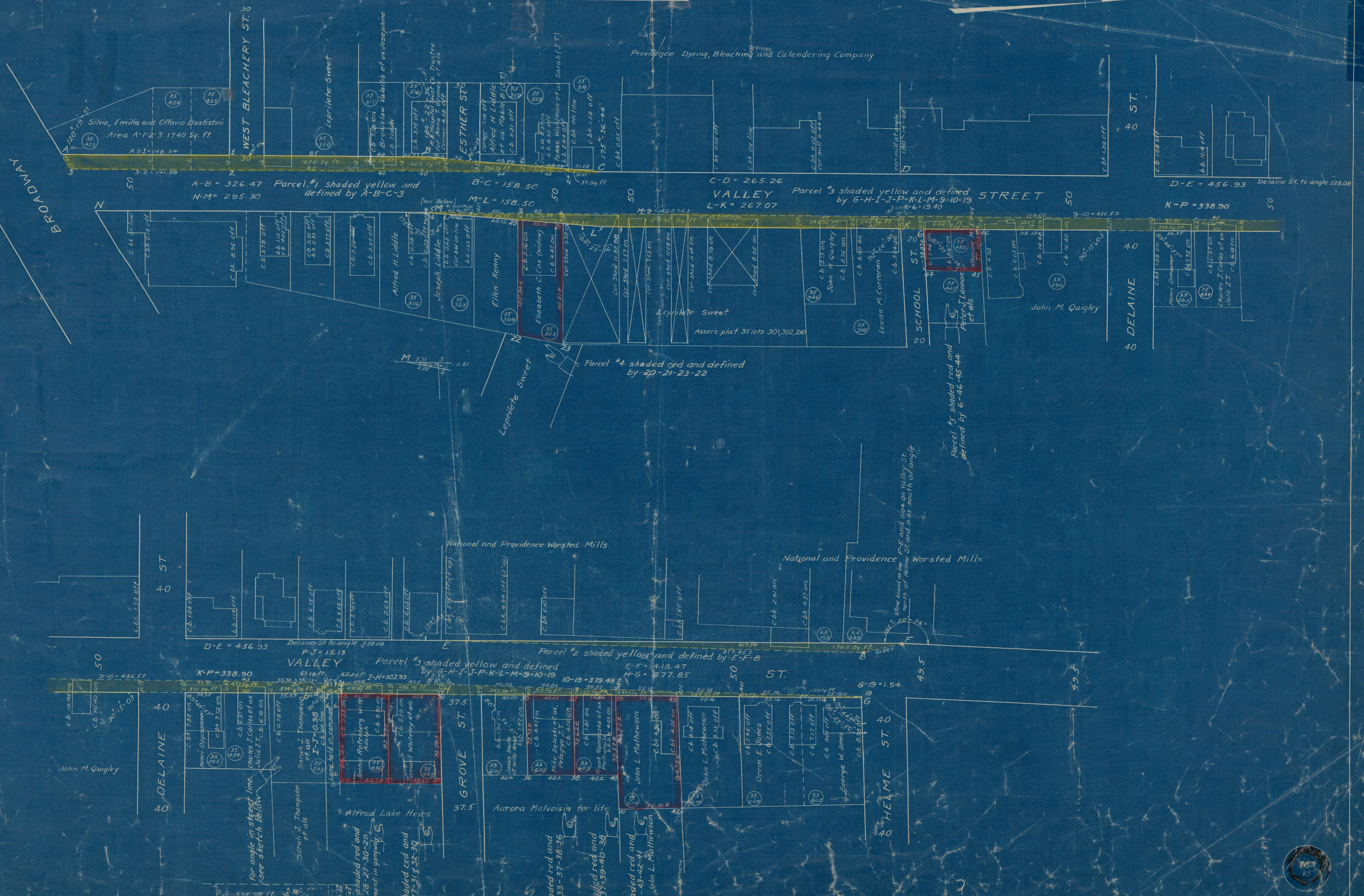


STATEMENT
 LAND BONDENMED
 pursuant to the provisions of Chapter 2116 of the
 Public Laws entitled "An Act relating to the taking
 of Land in the City of Providence and Pawtucket for Highway
 Purposes passed by the General Assembly at its January Session
 A.D. 1921 and by and in accordance with the Joint Resolution of
 the City Council of Providence numbered 595
 Approved November 8, 1922, condemning certain land for Highway purposes
 Mayor of the City of Providence

PROVIDENCE, R.I.
 CITY ENGINEER'S OFFICE
 CITY PROPERTY DEPT.
 DEC. 27, 1922
 046.001
 076083



28076
 76
 A-78

CITY OF PROVIDENCE
 ENGINEERING DEPARTMENT
 Showing Land condemned for the
 widening of Valley St.
 Drawn by Wright checked by Hester
 Scale 1" = 40' Date NOV 1, 1922
 Carter T. Edwards, Chief Engineer

76