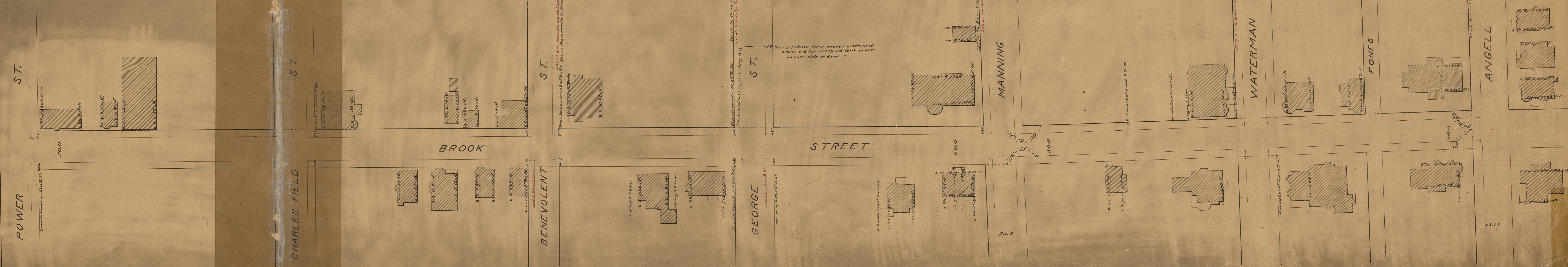
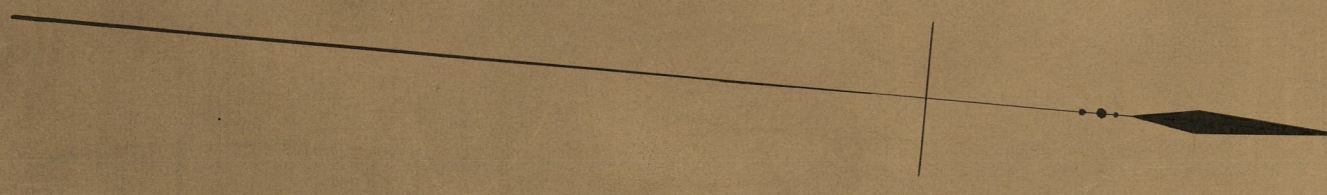


Map of BROOK STREET

FROM POWER ST. TO ANGELL ST.
scale 40 feet per inch.

Note, The location of Brook street from Power street to Charles Field street is fixed by plat 81 & 30, the east line ranging from a bound at N.E. corner Power & Brook streets to a bound about 90 feet north of Benevolent street. The location from Charles Field street to Angell street is not precisely defined by the plat made for laying out the same. (See 82 & 11 and original of same in City Clerk's office). In the absence of accurate information it is assumed that the location was intended to coincide with the plotted lines of Brook street. These are shown as far north as Manning street on "Map of the Division of land belonging to the heirs of Nicholas Brown and the heirs of Thomas P. Ives, surveyed and drawn by W. S. Haines June 7, 1856" (149 & 21) and from Manning street to Angell street on "Plot of part of a estate owned by the heirs of Nathan & Rufus Waterman, surveyed & platted by Atwater & Schubarth, Mar. 16, 1847." The lines shown have been fixed by careful study and comparison of these and other plats. See maps on Cards 82, 97, 119 and 128 recorder's office, also notes in F. B. Bourne's Field Books 1 page 254 X, p. 70, II, p. 81, X, p. 36, II, p. 59 and XIII pp. 30 and 153.



This bound may have been moved about 4 or 5 feet eastward since date of Brown & Ives plat. Thayer & Charles plat (80 & 20) was made.

It seems to have been moved westward about 0.12 to correspond with bound on east side of Brook St.