

# Map of River Avenue

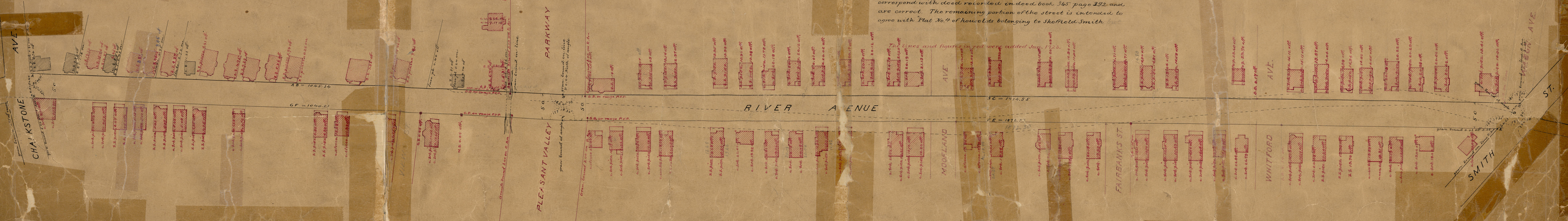
from Smith street to Chalkstone avenue

Scale 60 feet per inch.

The lines from Smith street southerly to the angle near the brook correspond with deed recorded in deed book 365 page 292 and are correct. The remaining portion of the street is intended to agree with Plat No. 4 of house lots belonging to Sheffield Smith but

The lines and figures in red were added Jan. 1723.

PROVIDENCE, R. I.  
CITY ENGINEER'S OFFICE  
STREET LINE DEPT.  
Apr. 10 1891  
017732



76  
A-34

76  
A-34