

PROVIDENCE, R.I.  
CITY ENGINEER'S OFFICE  
STREET LINE DEPT.  
June 27, 1906  
034520

Note, The area declared a public highway  
is indicated by the letters A, B, C and D.  
The lines conform to deed in Deed Book  
373, page 466, in the office of the Recorder  
of Deeds

# PLAT OF SORRENTO STREET

FROM UNION AVE. TO WAVERLY ST.

SCALE 50 FEET PER INCH.

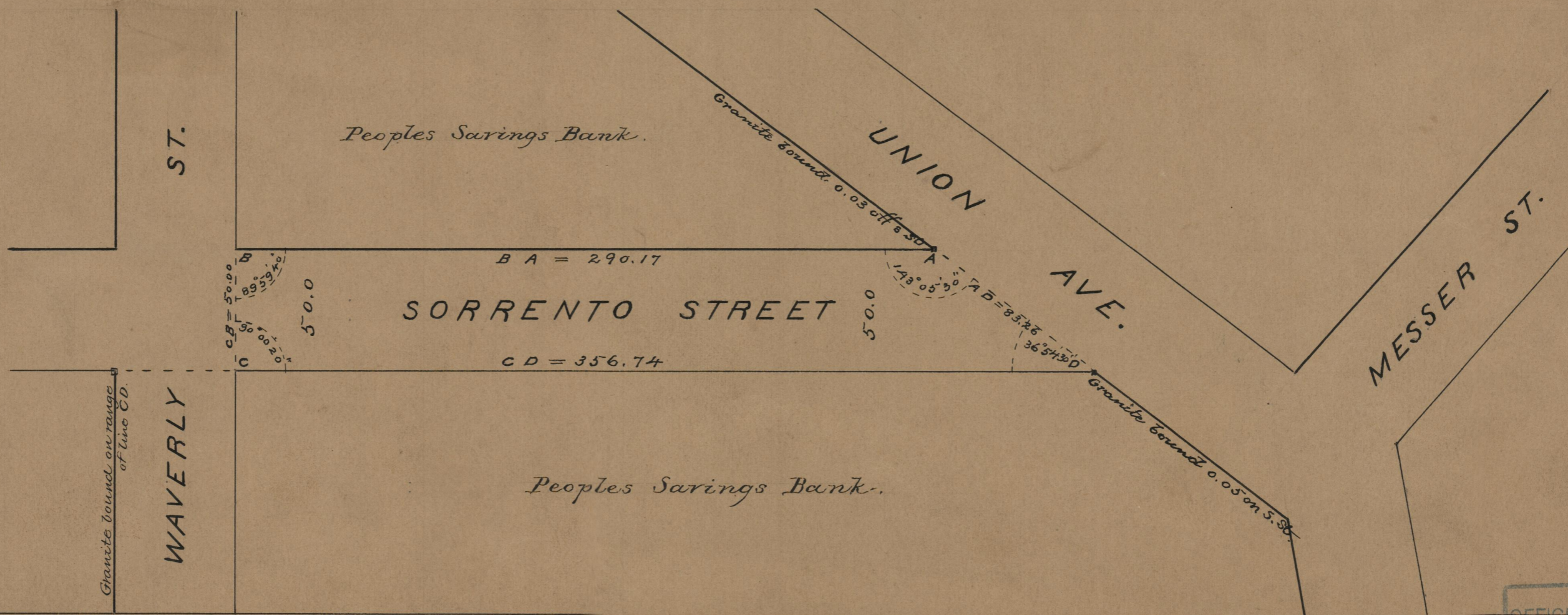
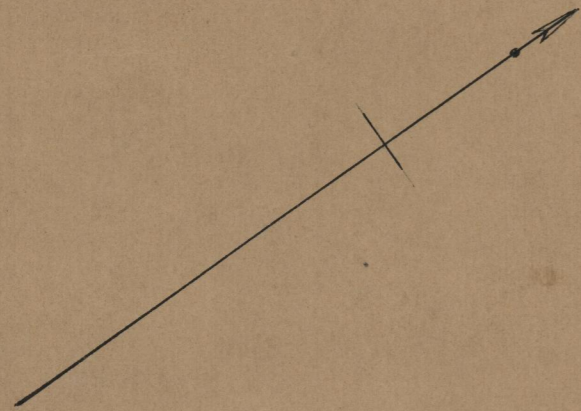
DECLARED A PUBLIC HIGHWAY  
BY RESOLUTION OF THE  
BOARD OF ALDERMEN

April 19, 1906.

290.17  
356.74  
2) 646.91  
323.455

Witness, -----

City Clerk.



OFFICE No.	17287
DRAWER	75
SHEET	B-98