

PLAT OF MOUNT PLEASANT AVENUE

FROM ATWELLS AVE. TO DOVER ST.

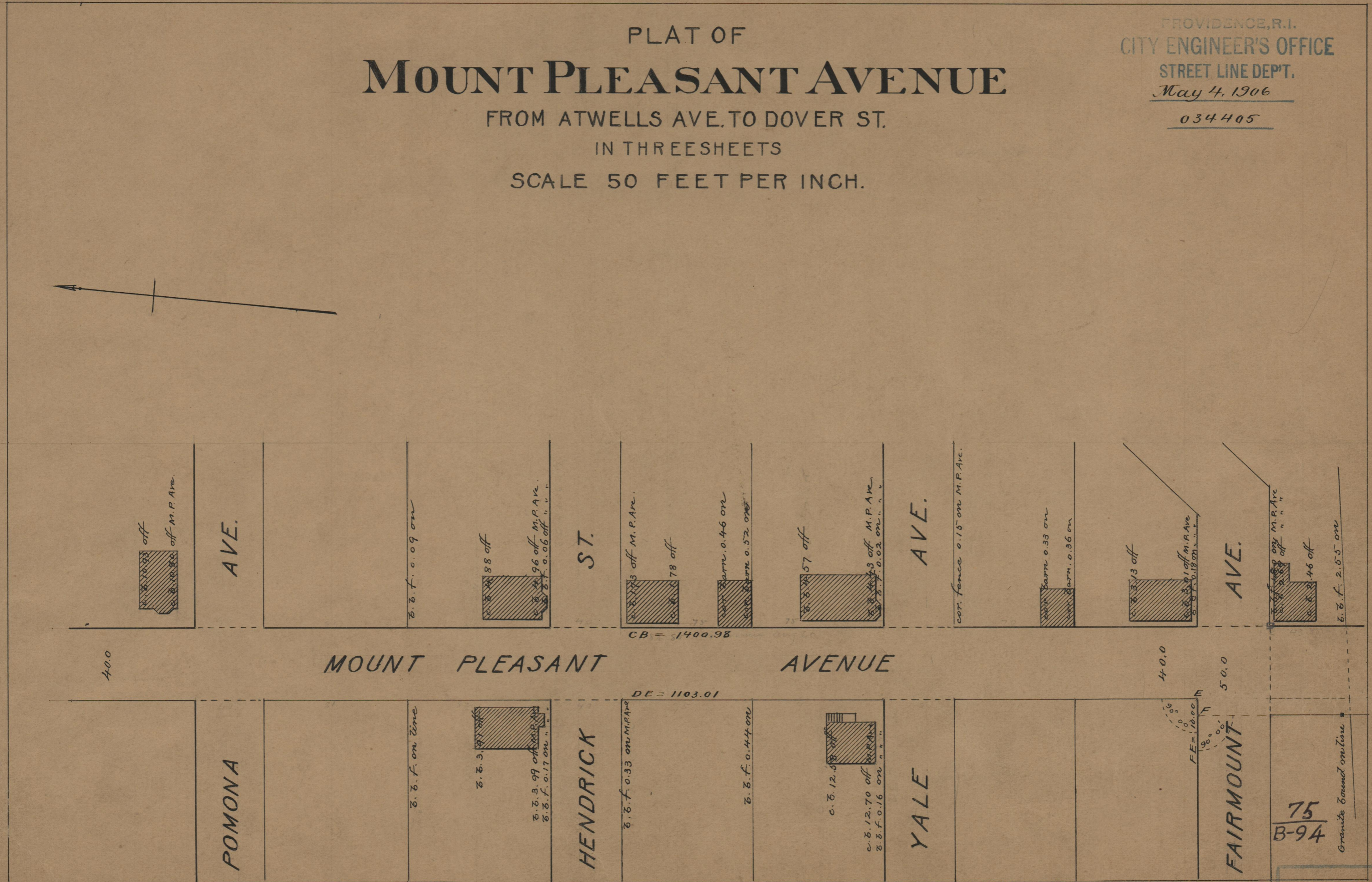
IN THREESHEETS

SCALE 50 FEET PER INCH.

PROVIDENCE, R.I.
CITY ENGINEER'S OFFICE
STREET LINE DEPT.

May 4, 1906

034405



75
B-94

Granite Bound on line

OFFICE No.	17263
DRAWER	75
SHEET	5-94