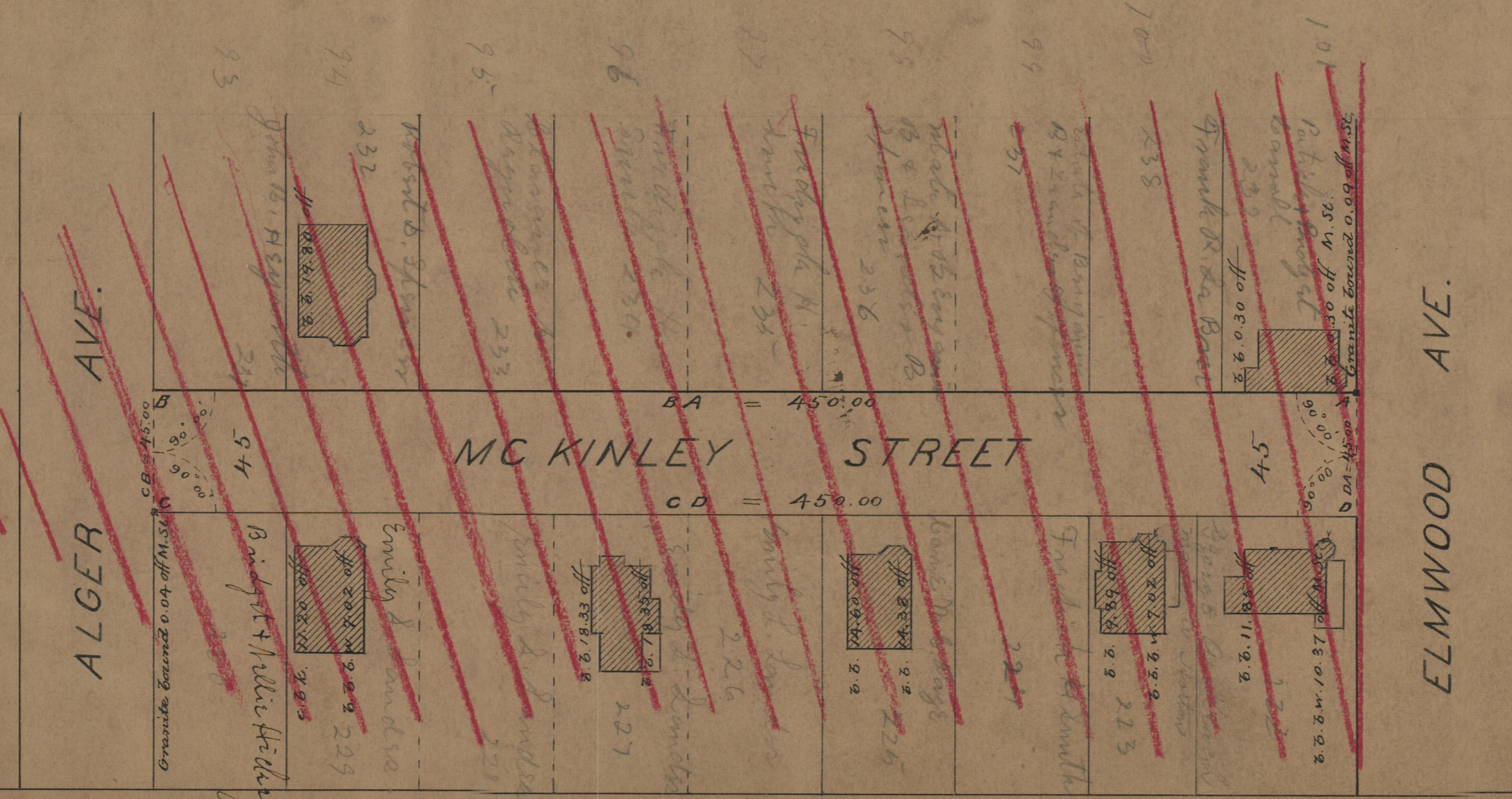
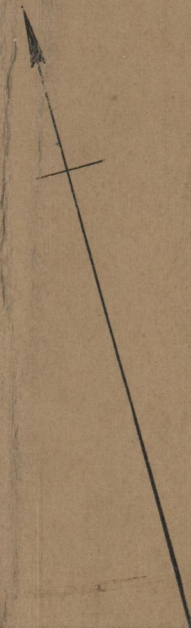


Alexander McCaughey  
City Engineer  
F B B XXVII - 95

PROVIDENCE, R.I.  
CITY ENGINEER'S OFFICE  
STREET LINE DEPT.  
Mar. 20, 1906  
034297

PLAT OF  
**MCKINLEY STREET**

FROM ELMWOOD AVE TO ALGER AVE.  
SCALE 50 FEET PER INCH.



ALGER AVE.

ELMWOOD AVE.

MCKINLEY STREET

BA = 450.00

CD = 450.00

Granite board 0.04 off M. St.  
CB = 45.00

Granite board 0.09 off M. St.  
D DA = 45.00

75  
B-92

17240  
75  
B-92