

PROVIDENCE, R.I.  
CITY ENGINEER'S OFFICE  
STREET LINE DEP'T.

Dec. 30, 1905

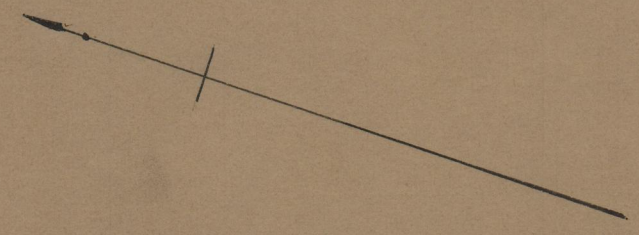
034171

Note. The area declared a public highway  
is indicated by the letters A, B, C and D.  
The lines conform to deed in Deed Book 386,  
page 62 in the office of the Recorder of Deeds.

# PLAT OF POE STREET

FROM RHODES ST. TO PUBLIC ST.  
SCALE 50 FEET PER INCH.

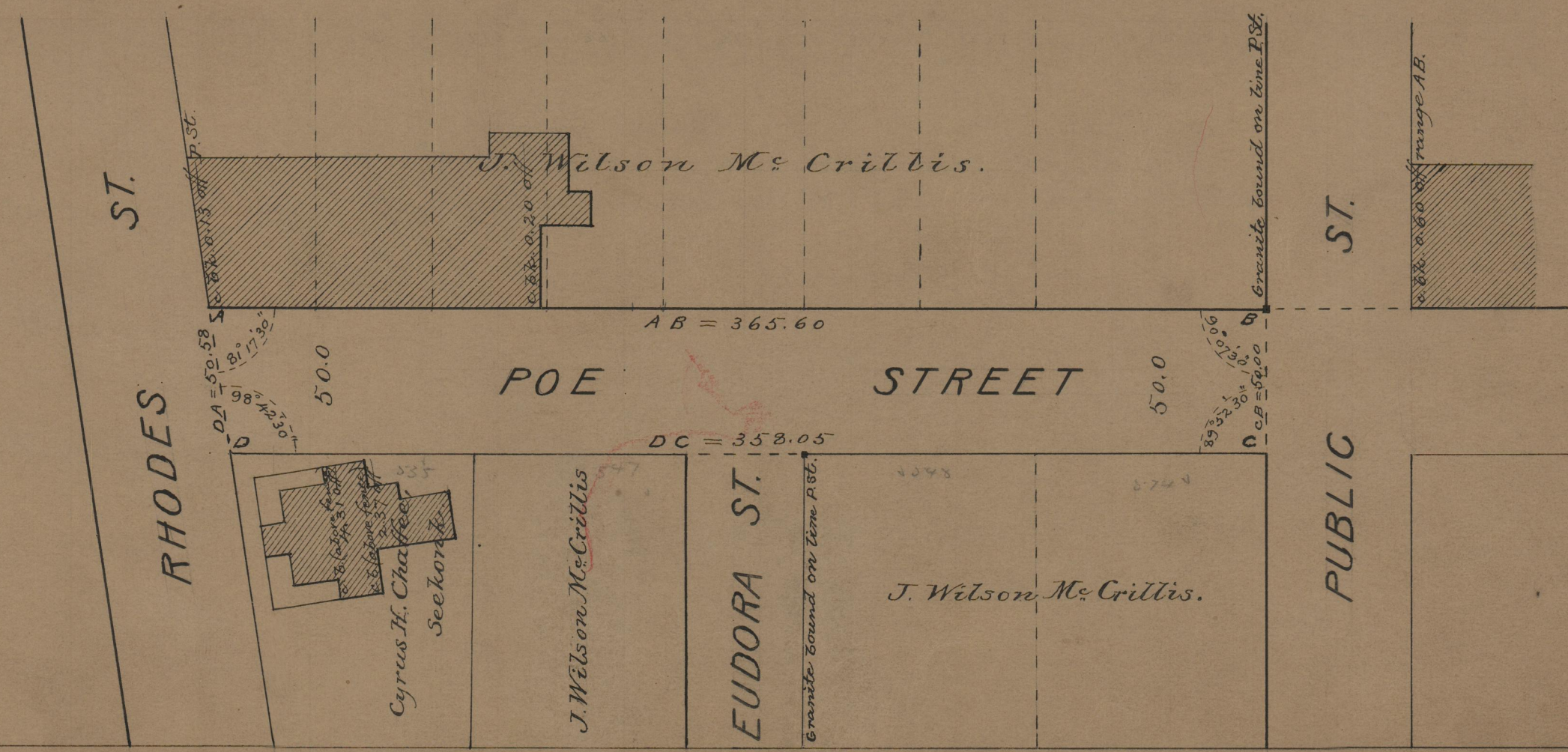
DECLARED A PUBLIC HIGHWAY  
BY RESOLUTION OF THE  
BOARD OF ALDERMEN  
November 16, 1905.



365.60  
358.05  
723.65  
361.82

Witness -----

City Clerk.



75  
B-89

75  
B-89  
17204  
No. 17204  
WER 15  
B 8