

PROVIDENCE, R.I.
CITY ENGINEER'S OFFICE
STREET LINE DEPT.

Dec. 30, 1905

034165

Note, The area declared a public highway is indicated by the letters A, B, C, D, E & F.
The lines conform to deed in Deed Book 365, at page 270, in the office of the Recorder of Deeds.
The line CD being the easterly limit of the portion of the highway as declared ranges with "the easterly line of lot numbered six hundred and fifty nine (659) on the Moses Brown Farm Plat, replatted August, 1891 by Charles E. Paine, which plat is recorded on platcard six hundred and forty (640) in the office of the Recorder of Deeds of the City of Providence."

PLAT OF ELTON STREET FROM HUMBOLDT AVE. EASTERLY.

SCALE 40 FEET PER INCH.

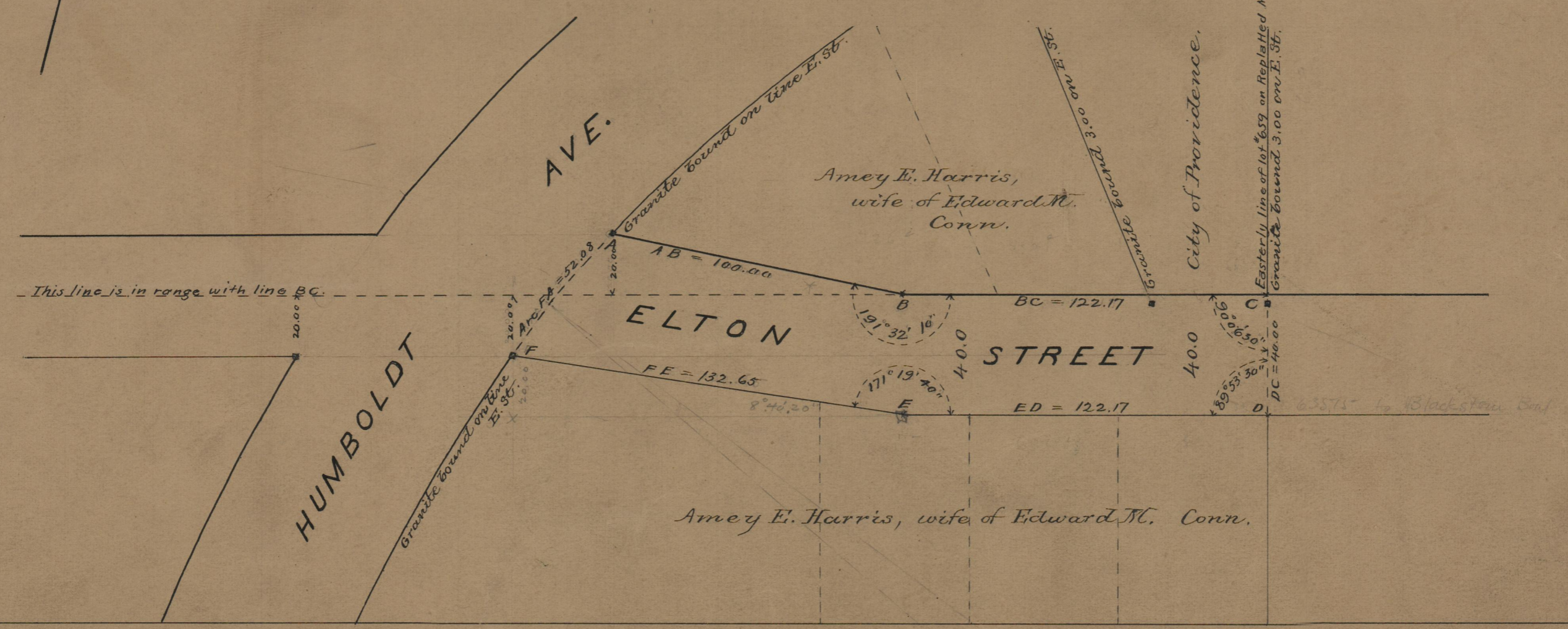
DECLARED A PUBLIC HIGHWAY
BY RESOLUTION OF THE
BOARD OF ALDERMEN
October 19, 1905.

222.17
254.82
476.99
238.50

132.65
122.17
254.82

Witness -----

City Clerk.



75
B-96

75
B-96

OFFICE No. 17201
DRAWER " 75