

PROVIDENCE, R.I.  
CITY ENGINEER'S OFFICE  
STREET LINE DEPT.  
Dec. 21, 1905

034148

Note, The area declared a public highway  
is indicated by the letters A, B, C & D.  
The lines conform to deed in Deed Book  
59, page 496, Johnston Records (now in  
Providence Record office.)

# PLAT OF WALLACE STREET

FROM WHITEHALL ST. TO PRISCILLA AVE.

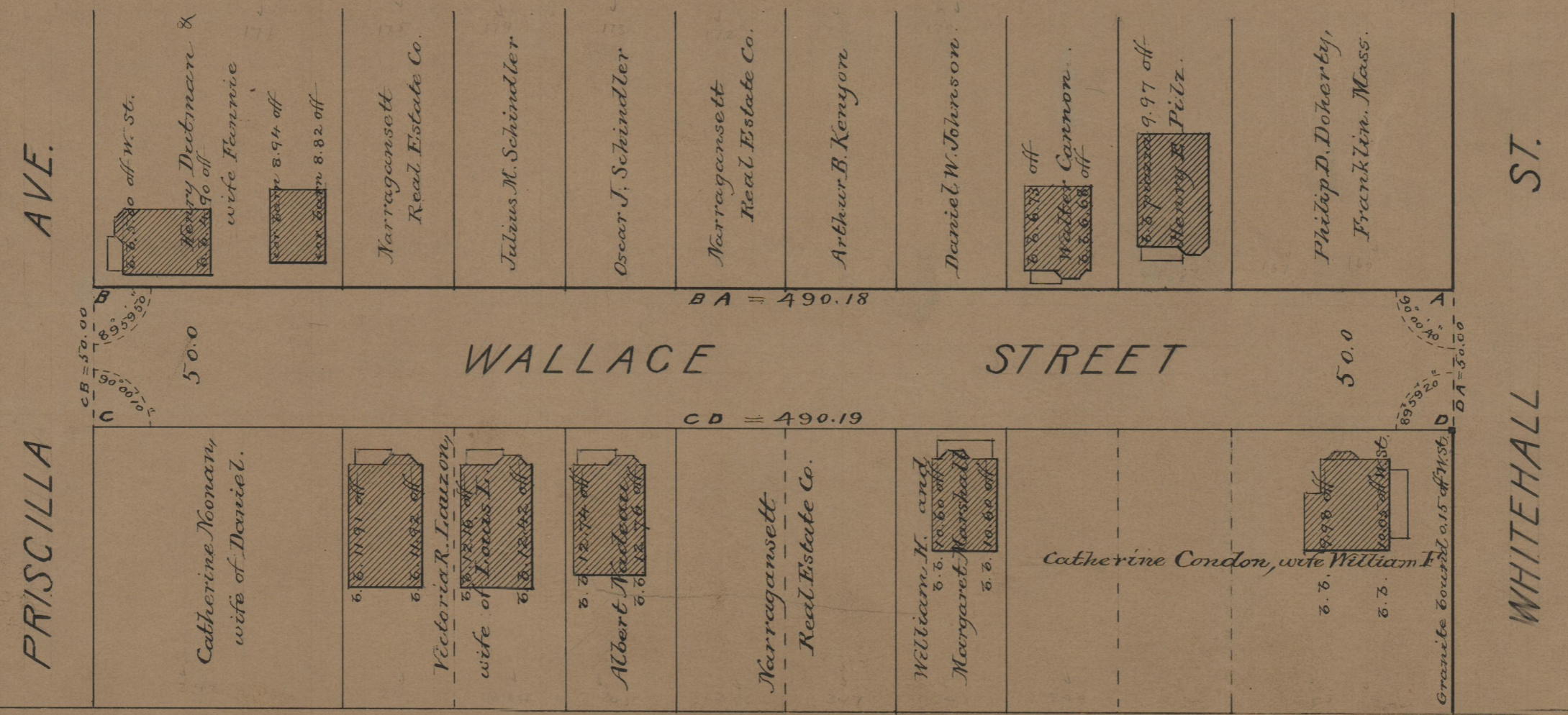
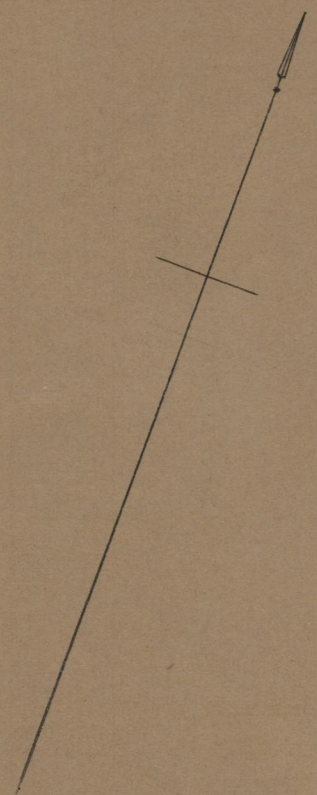
SCALE 50 FEET PER INCH.

DECLARED A PUBLIC HIGHWAY  
BY RESOLUTION OF THE  
BOARD OF ALDERMEN

Sept. 21, 1905.

Witness, \_\_\_\_\_

City Clerk.



75  
B-85

75  
B-85

OFFICE No.	17200
DRAWER	75
SHEET	B-85