

Note, The area declared a public highway is indicated by the letters A, B, C. & D. The lines conform to deed in deed book 365, page 270 in the office of the Recorder of Deeds.

PROVIDENCE, R.I.
CITY ENGINEER'S OFFICE
STREET LINE DEPT.

Dec. 21, 1905

034150

PLAT OF TABER AVENUE FROM LLOYD AVE. TO PRESIDENT AVE.

SCALE 60 FEET PER INCH.

DECLARED A PUBLIC HIGHWAY
BY RESOLUTION OF THE
BOARD OF ALDERMEN

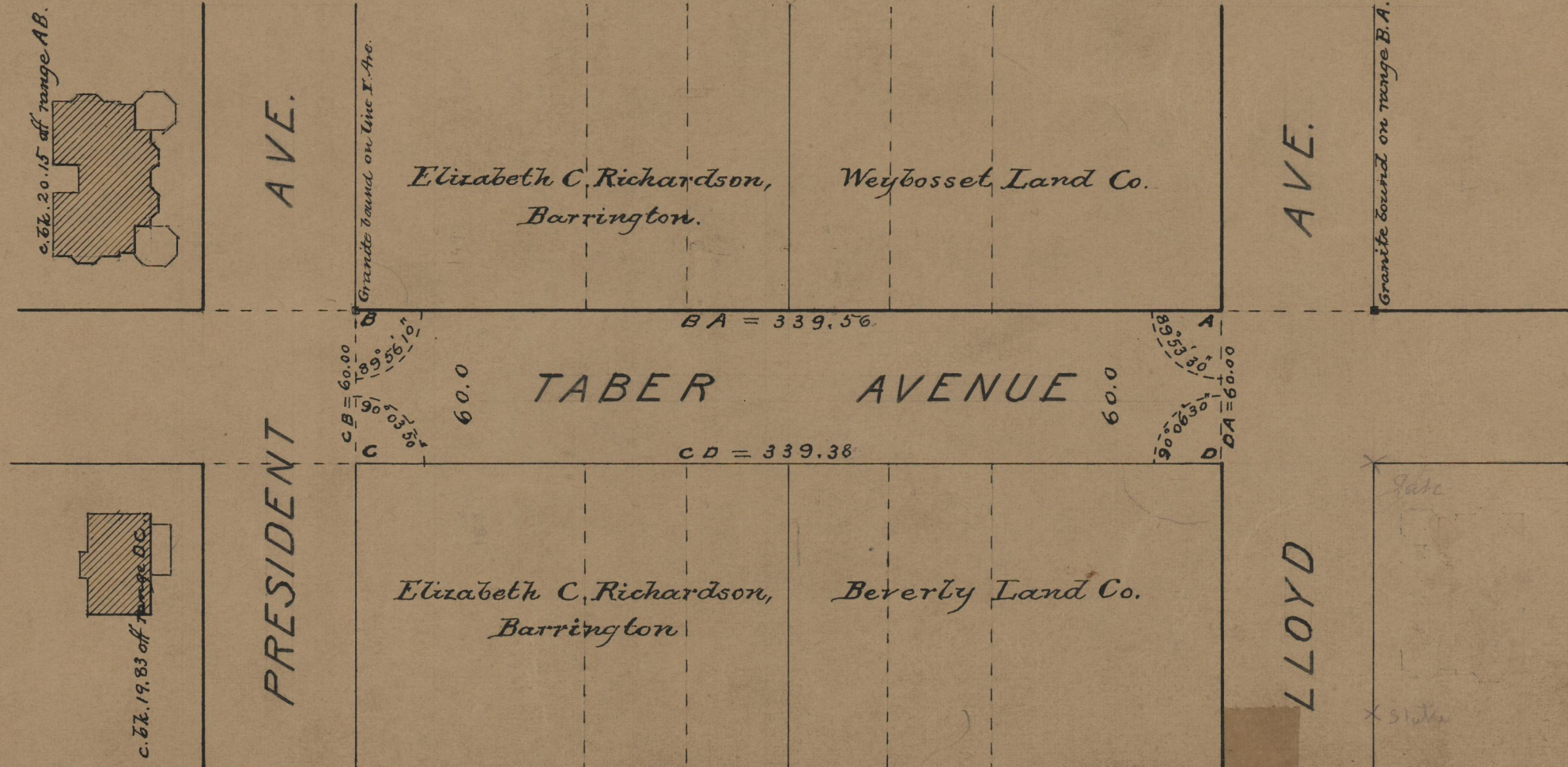
Sept. 21, 1905.

Witness, -----

City Clerk.

339.56
539.38

2678.94
339.49



OFFICE No. 17199
DRAWER 75
SHEET B-84