

Chas. C. Remington  
43 Custom House St.  
Room 37

PROVIDENCE, R.I.  
CITY ENGINEER'S OFFICE  
STREET LINE DEPT.

Aug. 12, 1905

033959

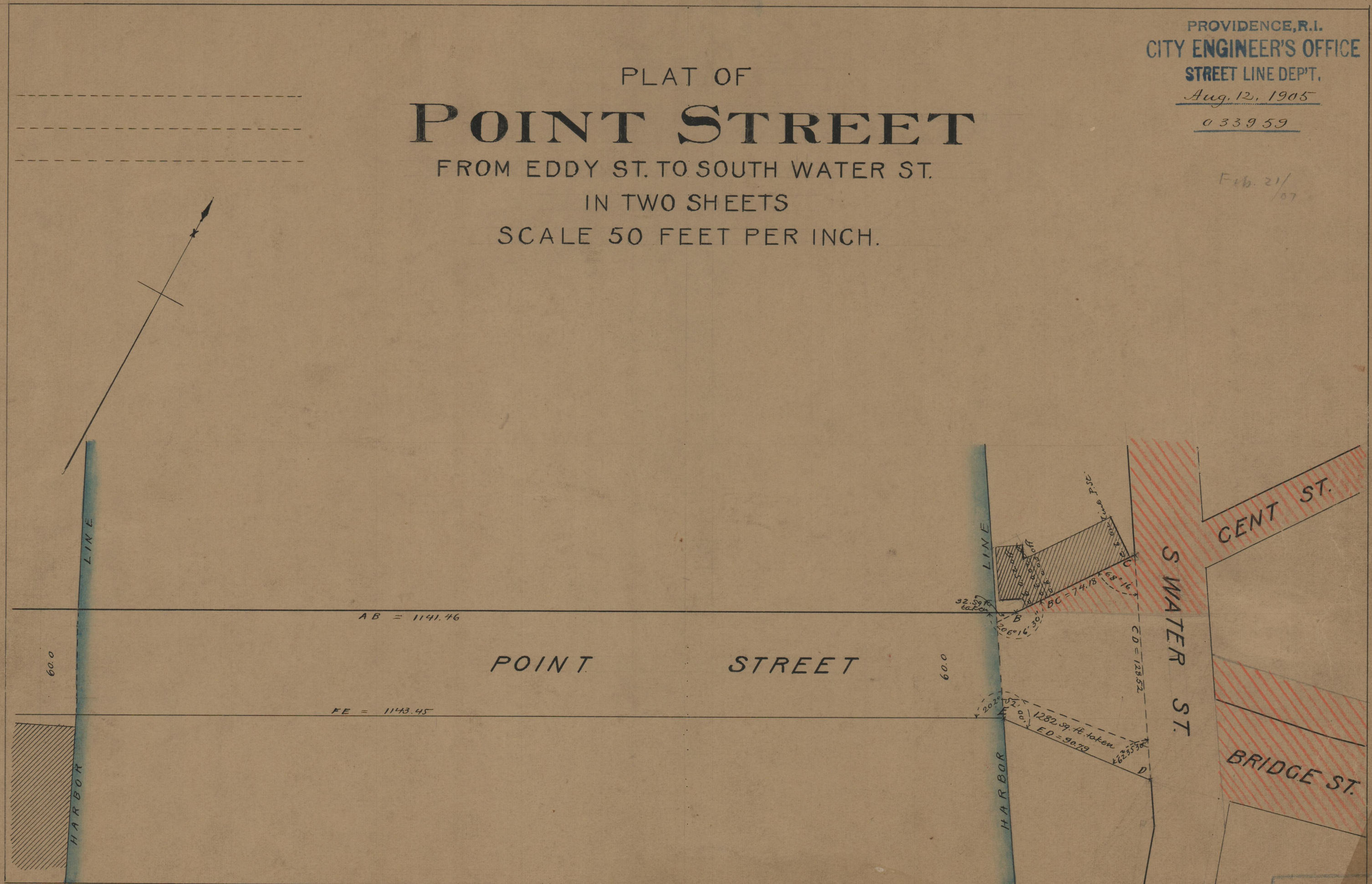
Feb. 21/07

PLAT OF  
**POINT STREET**

FROM EDDY ST. TO SOUTH WATER ST.

IN TWO SHEETS

SCALE 50 FEET PER INCH.



75  
B-79

75  
B-79

OFFICE No.	17162
DRAWN	75
SHEET	B-79