

PROVIDENCE, R.I.
CITY ENGINEER'S OFFICE
STREET LINE DEPT.

Aug. 3, 1905

033944

PLAT OF GROTTO AVENUE

FROM THE NORTHERLY LINE OF CHANNING AVE.
TO IRVING AVE.

SCALE 50 FEET PER INCH.

DECLARED A PUBLIC HIGHWAY

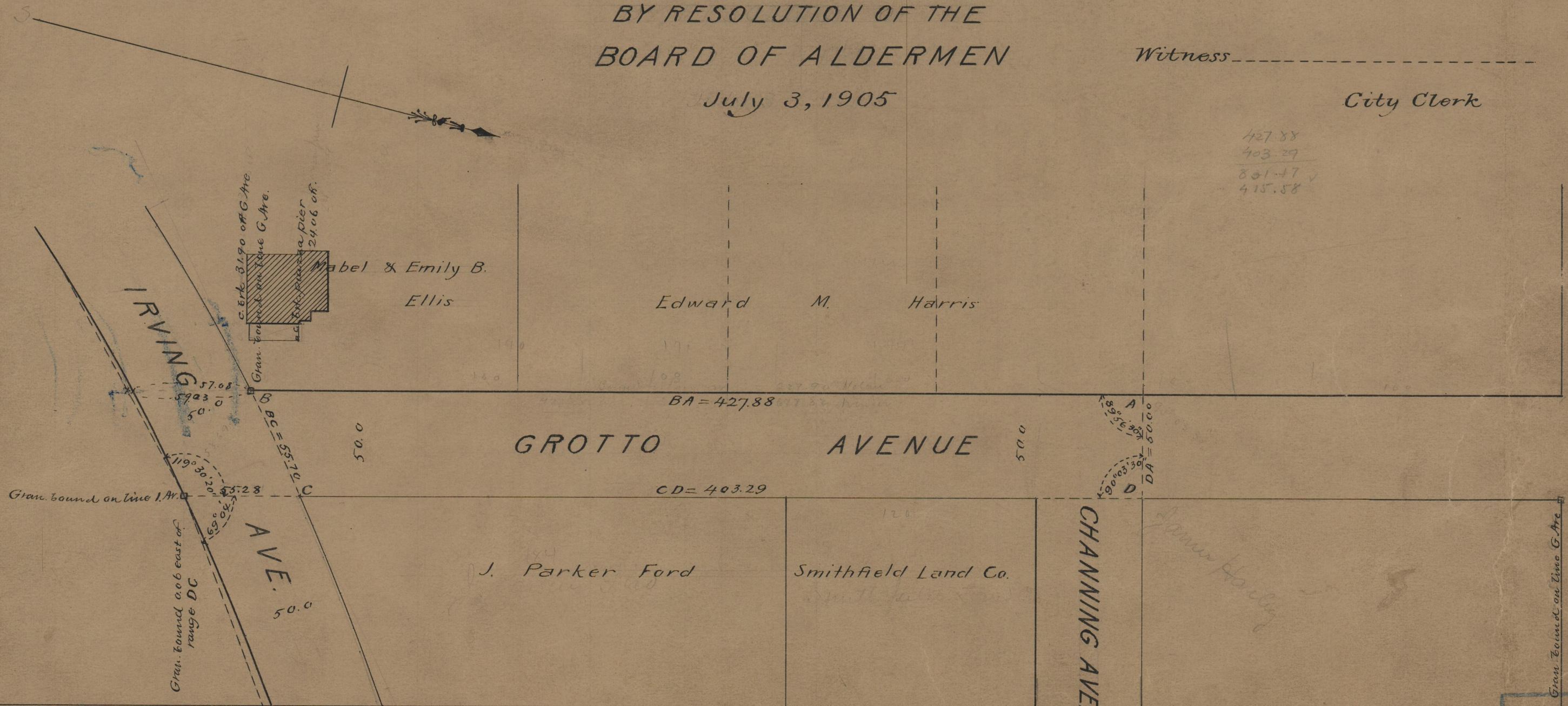
BY RESOLUTION OF THE
BOARD OF ALDERMEN

July 3, 1905

Witness -----

City Clerk

Note,
The area declared a public highway is
indicated by the letters A B C and D.
The lines conform to the deeds in
Deed Books 410, page 358, 431, page
230, and 460, page 290, in the office
of the Recorder of Deeds.



427.88
403.29
831.17
415.58

PRESIDENT

B

75
B 77

OFFICE No. 17158

75