

# PLAT OF NARRAGANSETT AVENUE

FROM THE CITY LINE TO A POINT  
ABOUT 961 FT. NORTH OF ROGER WILLIAMS AVE.  
IN TWO SHEETS  
SCALE 60 FEET PER INCH.

DECLARED A PUBLIC HIGHWAY BY THE  
BOARD OF ALDERMEN  
ON PETITION OF ABUTTING OWNERS  
December 15, 1904

PROVIDENCE, R.I.  
CITY ENGINEER'S OFFICE  
STREET LINE DEPT.

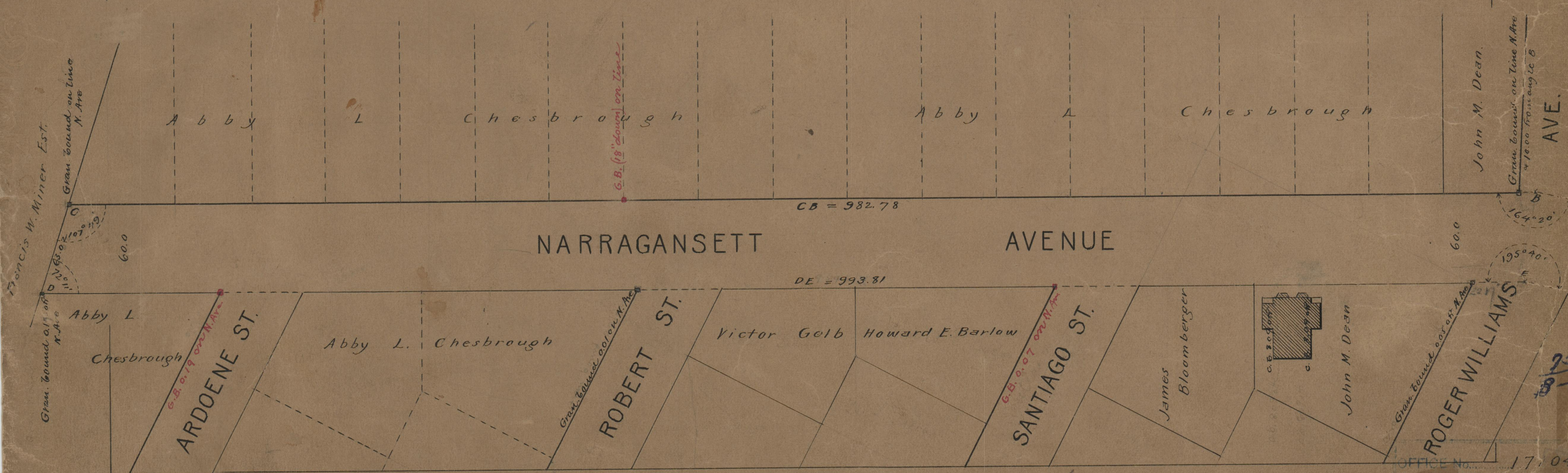
Mar. 31, 1905

033713

Note, The area declared a public highway is indicated by the letters A B C D E F.  
The lines of the street as thus fixed conform to the maps on which the street was originally platted. See "Map of House lots belonging to Thomas M. Rounds" on Card 208 in the office of the Recorder of Deeds, also "Plat of House lots belonging to Andrew Ford" on Card 296. in the same office.

982.78  
855.73  
1868.71  
1857.80  
3728.51  
1864.25

993.81  
865.99  
1859.10



OFFICE No. 17104  
DRAWER 75  
SHEET B-68

75  
B-68

17104

75  
B-68