

PROVIDENCE, R.I.  
CITY ENGINEER'S OFFICE  
STREET LINE DEPT.

Mar. 31, 1905

033712

# PLAT OF NARRAGANSETT AVENUE

FROM THE CITY LINE TO A POINT  
ABOUT 961 FT. NORTH OF ROGER WILLIAMS AVE.

IN TWO SHEETS

SCALE 60 FEET PER INCH.

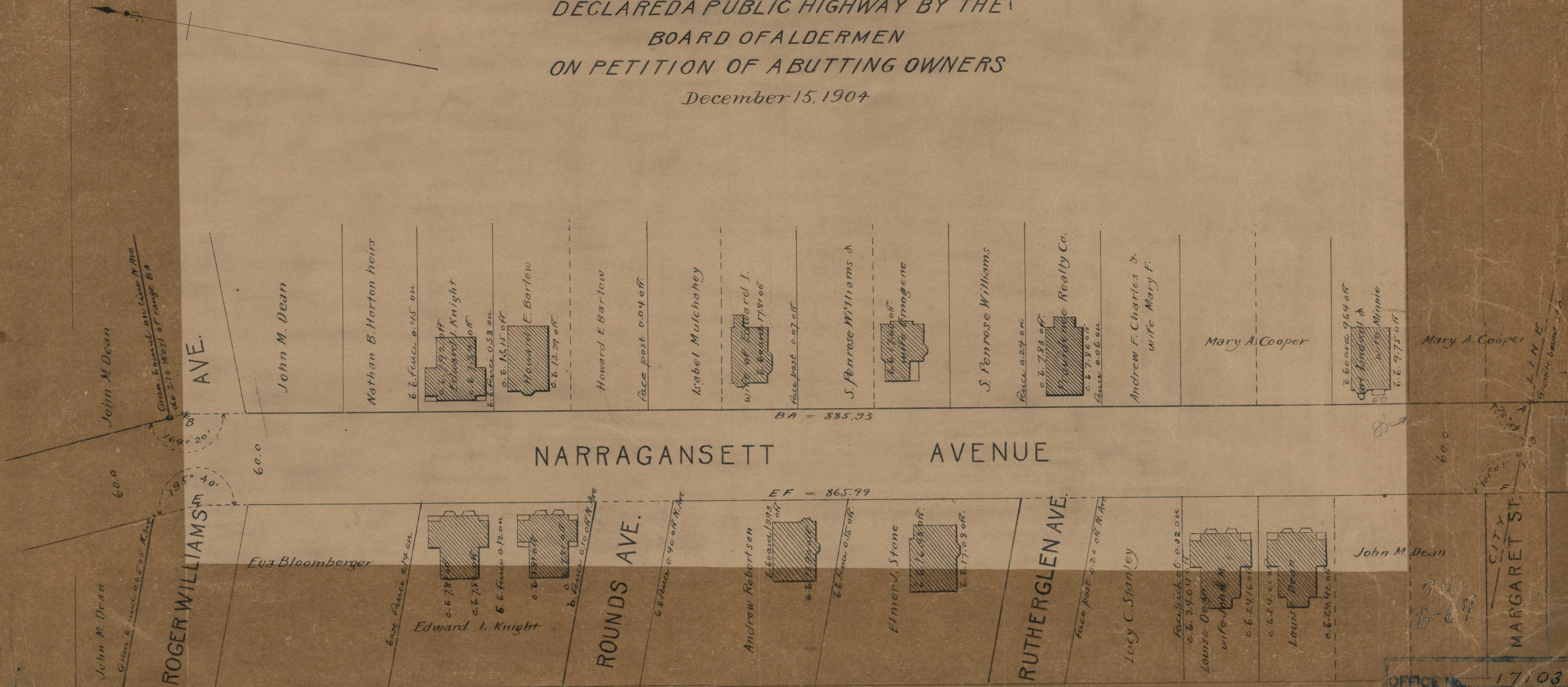
DECLARED A PUBLIC HIGHWAY BY THE  
BOARD OF ALDERMEN

ON PETITION OF A BUTTING OWNERS

December 15, 1904

Note. The area declared a public highway  
is indicated by the letters A B C D E F.

The lines of the street as thus fixed  
conform to the maps on which the street  
was originally platted. See "Map of House  
lots belonging to Thomas M. Rounds" on  
card 208 in the office of the Recorder  
of Deeds, also "Plat of House lots belonging  
to Andrew Ford on Card 296, same office



OFFICE NO. 17103  
DRAWER 75  
SHEET B-67