

PROVIDENCE, R.I.
CITY ENGINEER'S OFFICE
STREET LINE DEPT.

DEC. 27, 1904

033542

Note, The limits of the areas added to Borden Street to widen the same are indicated by the letters ABCD and EFGH. The lines of the street as thus widened conform to the deeds recorded in Deed Books 450 and 467 at pages 71 and 360 respectively.

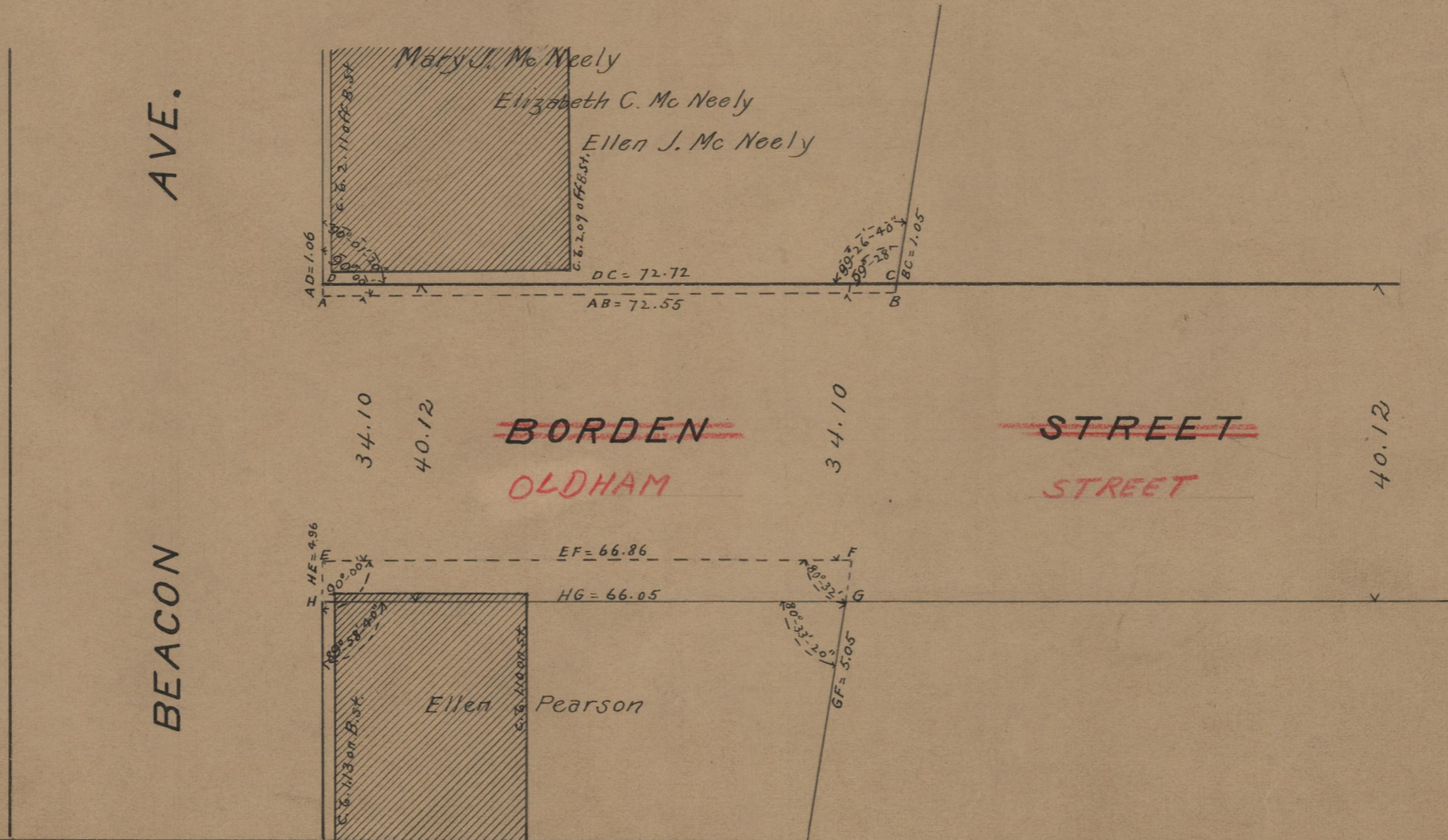
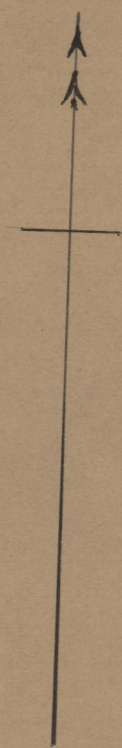
PLAT OF
BORDEN STREET
SHOWING WIDENING NEAR BEACON AVE.

SCALE 20 FEET PER INCH

WIDENED AND DECLARED A PUBLIC HIGHWAY
BY RESOLUTION OF THE
BOARD OF ALDERMEN
December 15, 1904.

CHANGED TO OLDHAM ST.

72.72
66.05
2)138.77
69.38



75
B-66
75
B-66

OFFICE NO. 16942
DRAWER 75
SHEET B-66