

PROVIDENCE, R.I.
CITY ENGINEER'S OFFICE

STREET LINE DEPT.

Nov. 4, 1904.

033428

Note, The limits of the area declared a public highway are indicated by the letters A B C D E F G H. The lines B C and G F agree with the deeds recorded in Deed Book 468 on pages 5, 6, 7, 186 and 187.

PLAT OF EASTWOOD AVENUE

FROM EASTERLY SIDE OF LAUREL HILL AVE.

TO EASTERLY SIDE OF RALPH ST.

SCALE 50 FEET PER INCH.

DECLARED A PUBLIC HIGHWAY
BY RESOLUTION OF THE
BOARD OF ALDERMEN

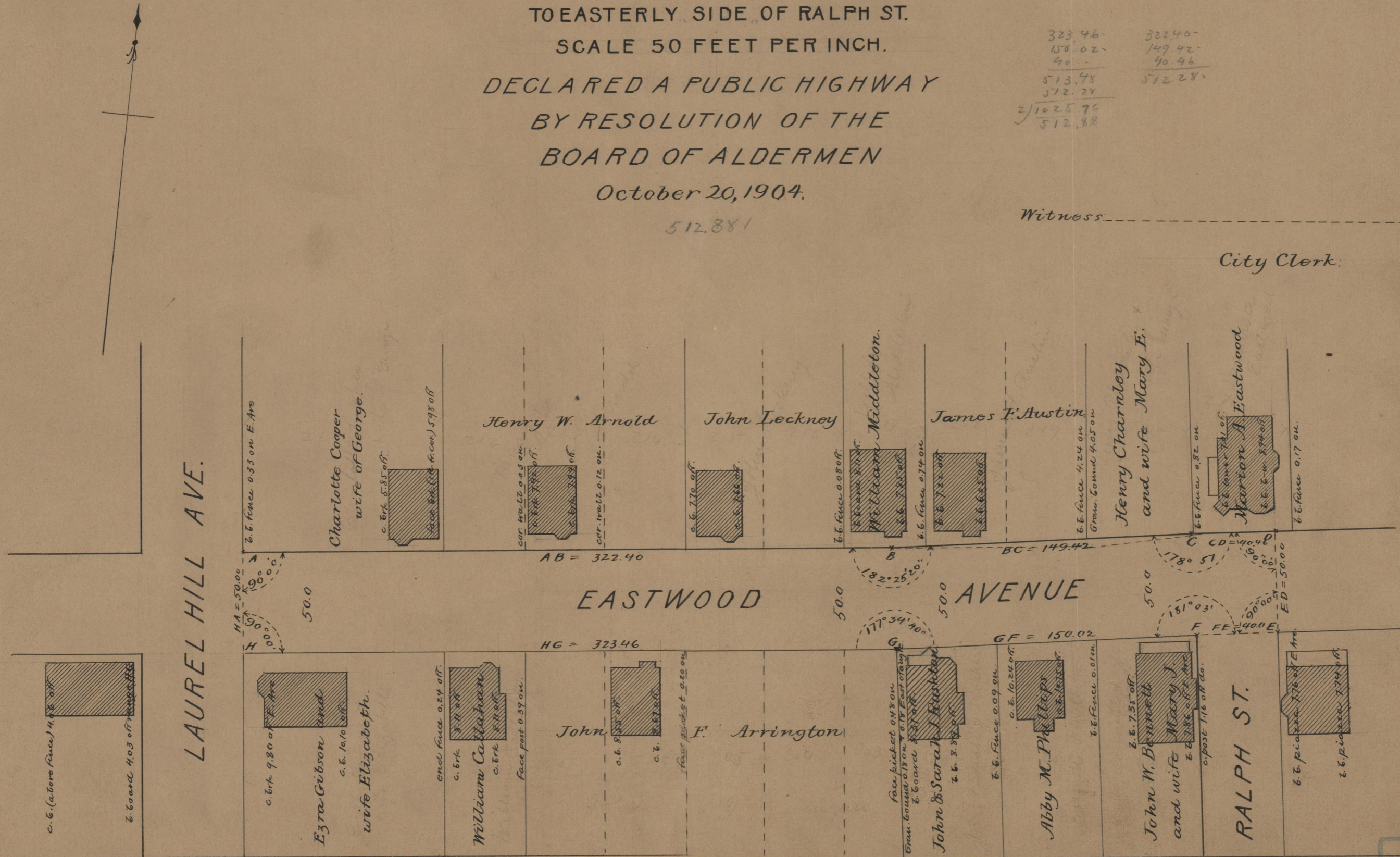
October 20, 1904.

512,881

323.46	32240-
150.02	149.42-
40-	40.46
513.48	512.28-
512.24	
2/1025.76	
512.88	

Witness _____

City Clerk:



75
B65

OFFICE No. 16870
DRAWER " 75
SHEET B-65