

PROVIDENCE, R.I.
CITY ENGINEER'S OFFICE
STREET LINE DEPT.

Nov 4, 1904

033430

Note, The area declared a public highway is indicated by the letters A, B, C & D. The lines conform to deed in Deed Book 59, page 496, Johnston Records, (now in Providence Record office).

PLAT OF ELMDALE AVENUE

FROM WEBSTER AVE. TO WHITEHALL ST.

IN TWO SHEETS

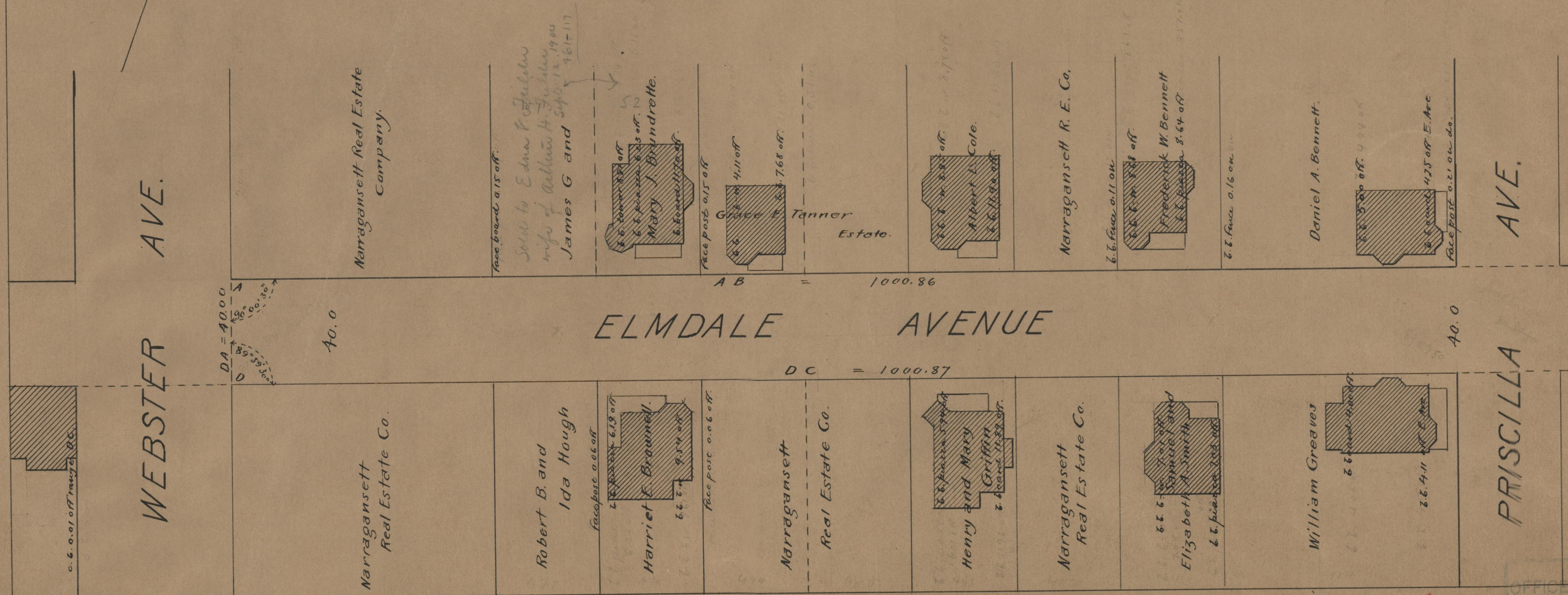
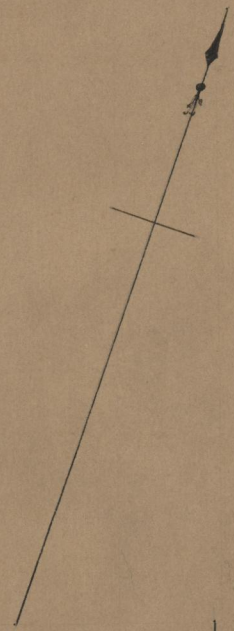
SCALE 40 FEET PER INCH.

DECLARED A PUBLIC HIGHWAY
BY RESOLUTION OF THE
BOARD OF ALDERMEN

October 20, 1904.

Witness: _____

City Clerk: _____



75
B63

75
B63

OFFICE No. 16868
DRAWER 75
SHEET B-83