

PROVIDENCE, R.I.
CITY ENGINEER'S OFFICE
STREET LINE DEPT.
June 29, 1904

033215

Note

The limits of the area declared a public highway are indicated by the letters A B C D.
The lines conform to deed in Deed Book 365 page 270 in the office of the Recorder of Deeds.

PLAT OF
EVERETT AVENUE
FROM ARLINGTON AVE. TO ELMGROVE AVE.

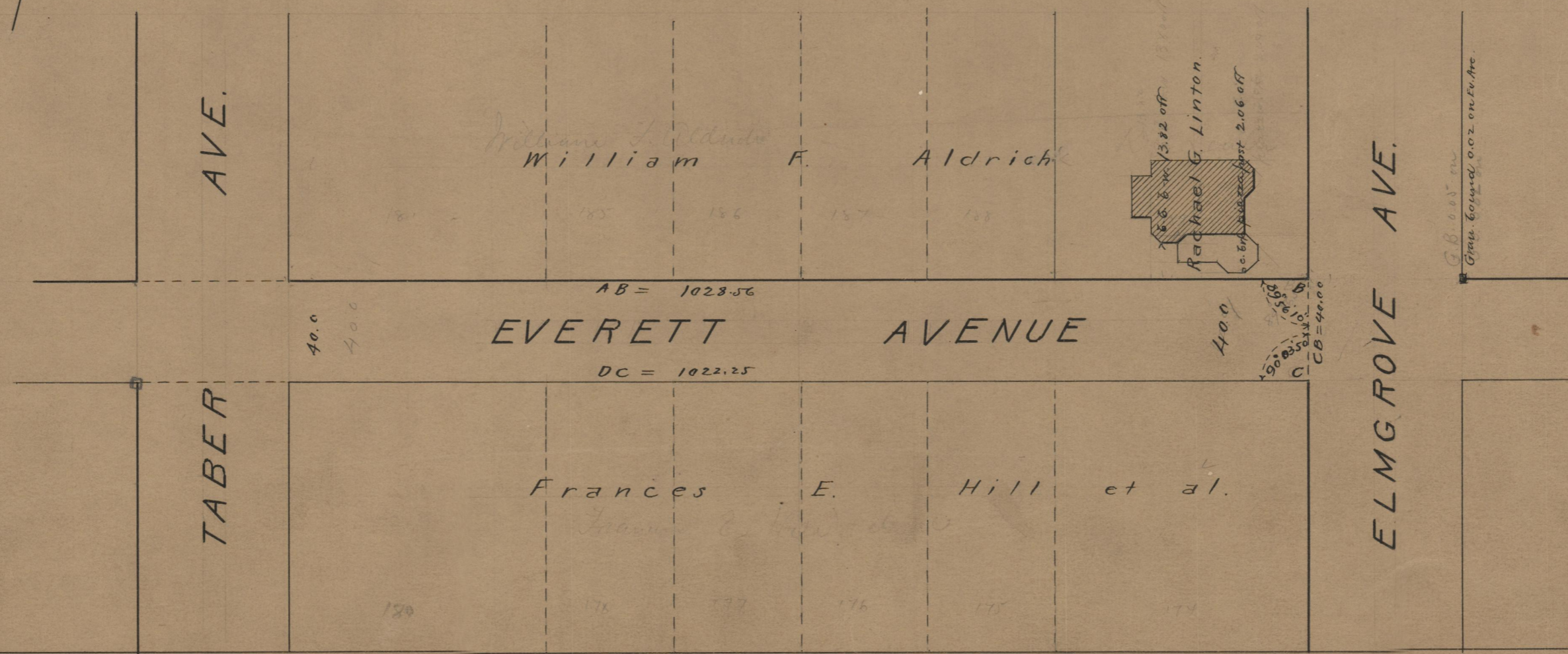
IN TWO SHEETS
SCALE 50 FEET PER INCH.
DECLARED A PUBLIC HIGHWAY
BY RESOLUTION OF THE
BOARD OF ALDERMEN,
June 16 1904

1028.56
1022.25
2050.81
1025.41

Witness _____
City Clerk.

563.44
1028.56
563.44
465.12
4

563.44
460.00
1023.44



75
B-55

75
B-55

OFFICE No. 16856
DRAWER " 75
SHEET " B-55

S.F.D.
A.R. 1904