

PROVIDENCE, R.I.
CITY ENGINEER'S OFFICE
STREET LINE DEPT.

Mar. 26, 1904

033029

Note, The limits of the area declared a public highway are indicated by the letters ABCD.

The lines fixed agree with the deeds recorded in Deed Book 379, page 19, and Deed Book 444, page 204 in the office of the Recorder of Deeds.

PLAT OF
THORNE STREET
FROM BELMONT AVE. TO ROANOKE ST.
SCALE 40 FEET PER INCH.
DECLARED A PUBLIC HIGHWAY
BY RESOLUTION OF THE
BOARD OF ALDERMEN
March 17, 1904.

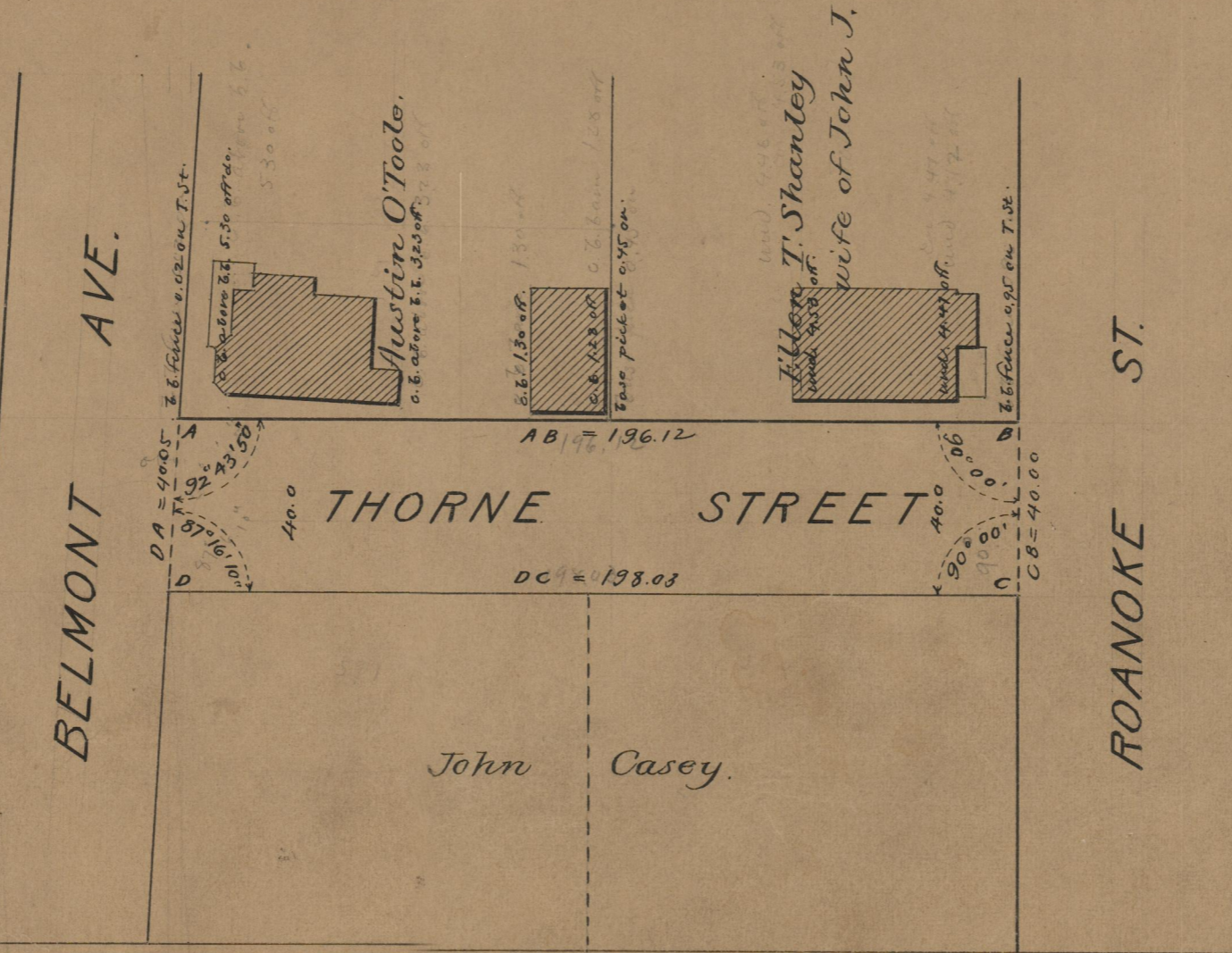
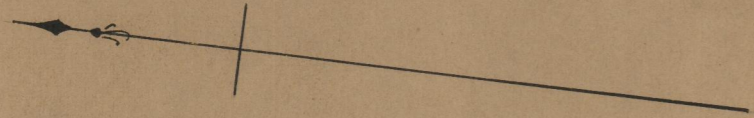
196.12
198.03

394.15
197.07

197.07 ✓

Witness

City Clerk.



OFFICE No.	16839
DRAWER	75
SHEET	B-51