

PROVIDENCE, R.I.
CITY ENGINEER'S OFFICE
STREET LINE DEPT.

Mar. 15, 1904

033006

Note, The limits of the area declared a public highway are indicated by the letters ABCD.
The lines conform to the deed in Deed Book 361, page 449, in the office of the Recorder of Deeds.

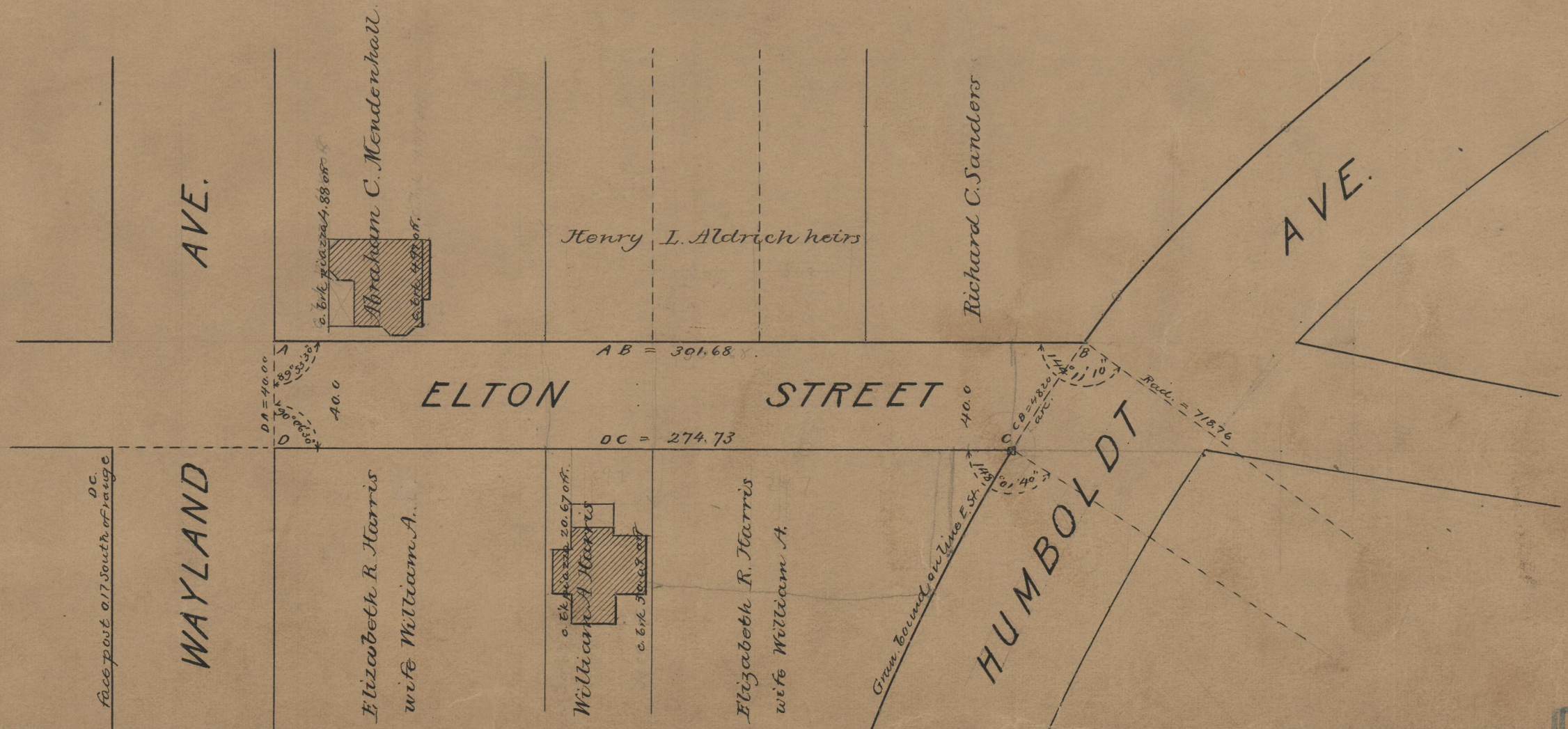
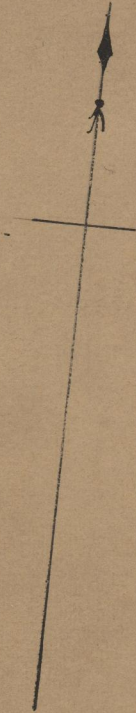
PLAT OF
ELTON STREET
FROM WAYLAND AVE. TO HUMBOLDT AVE.

SCALE 50 FEET PER INCH.
DECLARED A PUBLIC HIGHWAY
BY RESOLUTION OF THE
BOARD OF ALDERMEN

January 21, 1904.

288.21 ✓

301.68
274.73
2576.41
288.21



301.68
274.73
288.21

75
B-42

75-B-42

OFFICE NO. 16442
DRAWN BY 75