

SFM-144-17

SFY 1924 120

PROVIDENCE, R.I.  
CITY ENGINEER'S OFFICE

STREET LINE DEPT.

Dec. 31, 1903

031914

PLAT OF

# MOULTON STREET

FROM WESTMINSTER ST. TO BEWET ST.

SCALE 40 FEET PER INCH.

DECLARED A PUBLIC HIGHWAY BY THE  
BOARD OF ALDERMEN

(BY REASON OF 20 YEARS' USE)

September 17, 1903.

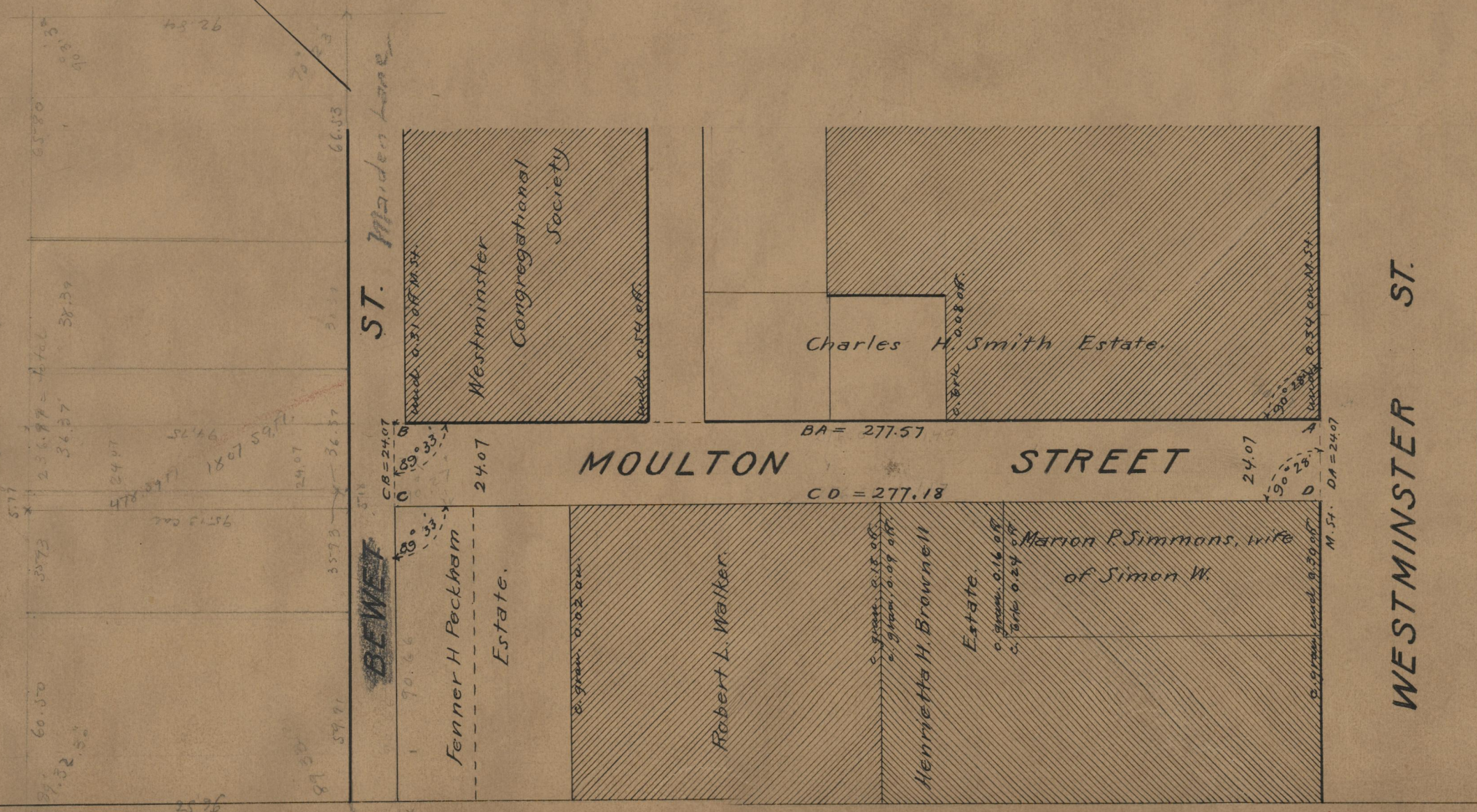
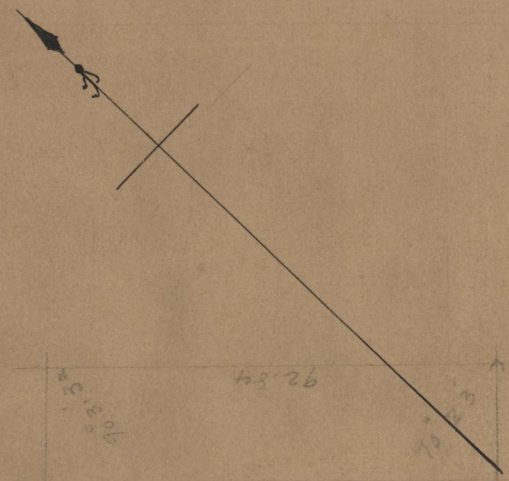
Moulton St, as shown hereon, is 90.56 from Snow St. and parallel therewith; the distance from Snow St. to Mathewson St on Westminster St being pro-rated according to J. Mathewson Plat (Card 398)

277.57  
277.18  
554.75  
277.37

277.37

Witness, -----

City Clerk.



WESTMINSTER ST.

MOULTON STREET

ST. Maiden Lane

BEWET

Handwritten notes on the left margin: 'rough estimate of area made from notes in this plat, and for widening of Washington St.'

75  
B-4

75  
B-4

OFFICE

15217  
75