

PROVIDENCE, R.I.  
CITY ENGINEER'S OFFICE  
STREET LINE DEPT.  
Dec. 28, 1903

031905

Note, The limits of the area declared a public highway are indicated by the letters A B C D.

The lines conform to the deeds recorded in Deed Book 445 on pages 74 and 442 in the office of the Recorder of Deeds.

# PLAT OF NINTH STREET

FROM N. MAIN ST. TO HIGHLAND AVE.

SCALE 50 FEET PER INCH.

DECLARED A PUBLIC HIGHWAY

BY RESOLUTION OF THE

BOARD OF ALDERMEN

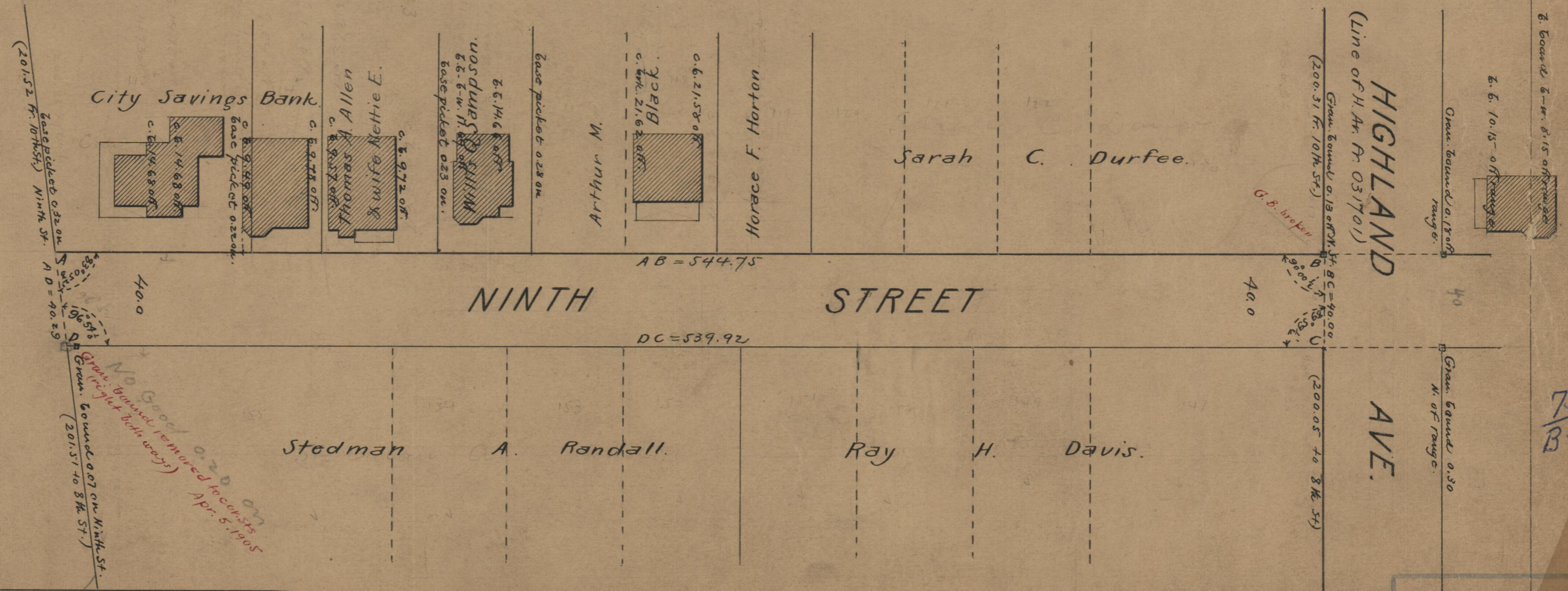
November 19, 1903.

544.75  
539.92  
2 | 1084.67  
542.33

Witness, \_\_\_\_\_

City Clerk

NORTH MAIN ST.



40.0  
40.0  
40.0

AB = 544.75

DC = 539.92

40.0

No Goods  
to be  
removed  
from  
this  
alley  
Apr. 5, 1905

75  
B-40

75-B-40

OFFICE No. 15116  
DRAWER " 75  
SHEET " 1