

L. I. Surfer Eng.

SFN 1424 126

PROVIDENCE, R.I.  
CITY ENGINEER'S OFFICE  
STREET LINE DEPT.  
Oct. 28, 1903

031811

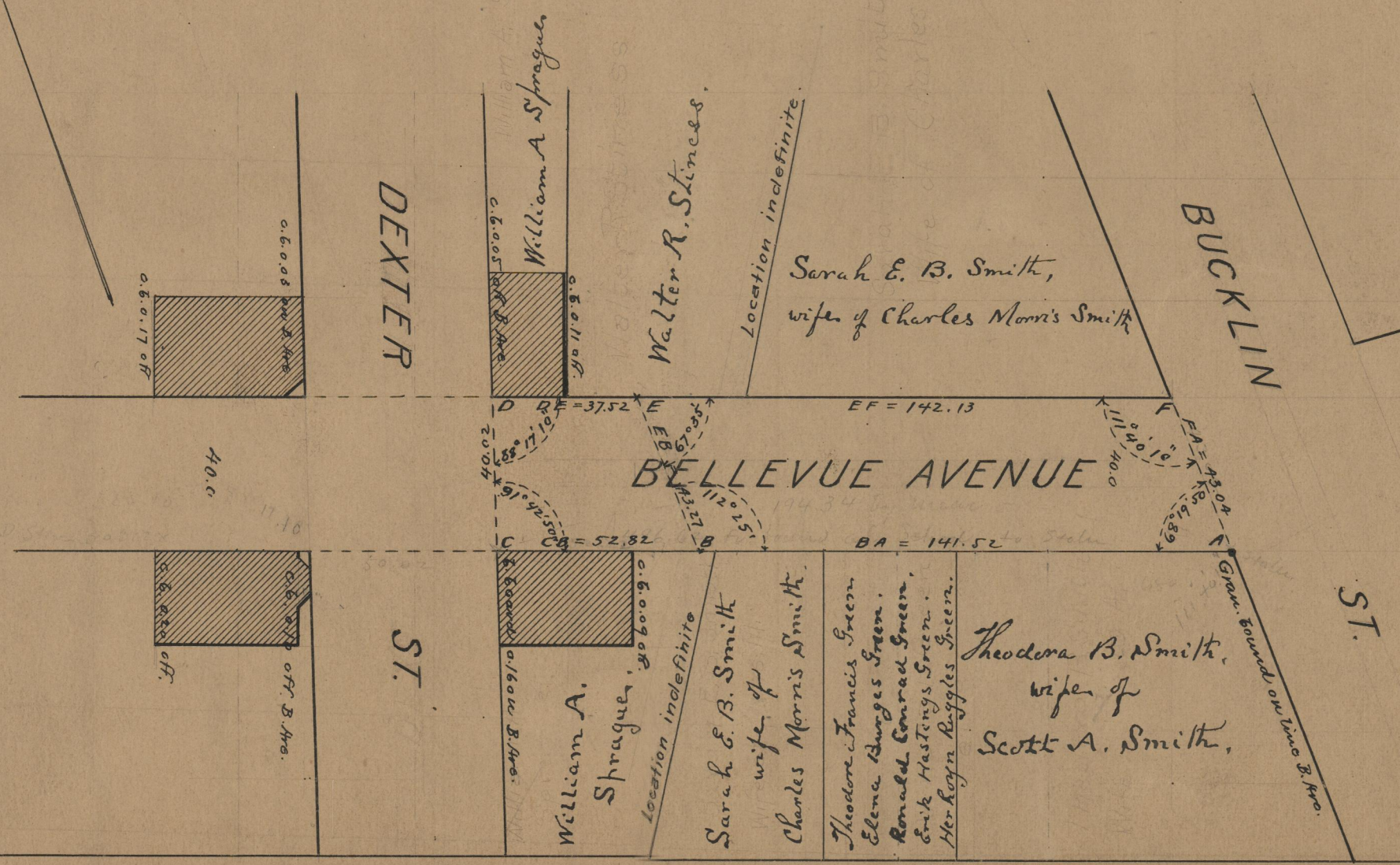
# PLAT OF BELLEVUE AVENUE BETWEEN BUCKLIN ST. AND DEXTER ST. SCALE 40 FEET PER INCH.

141.82 (to be laid out)  
45.17 already laid out

Note, The portion of Bellevue avenue indicated by the letters BCDE was included in the layout of said street made Oct. 20, 1887. From Bucklin street to a line, the location of which is indefinite, as stated below, Bellevue avenue was conveyed to the city by deed dated Apr. 14, 1894.

*This note was not shown on committees map.*

142.13	37.52
141.82	52.52
283.65	90.34
141.82	45.17



75  
B-39

OFFICE No. 15209  
DRAWER 75  
SHEET B-39