

PROVIDENCE, R.I.
CITY ENGINEER'S OFFICE
STREET LINE DEPT.

Nov. 11, 1903

031837

PLAT OF
ELTON STREET
FROM TABER AVE. TO ELMGROVE AVE.

Note, The limits of the area declared a public highway are indicated by the letters ABCD.

The lines conform to the deed recorded in Deed Book 365 on page 270 in the office of the Recorder of Deeds.

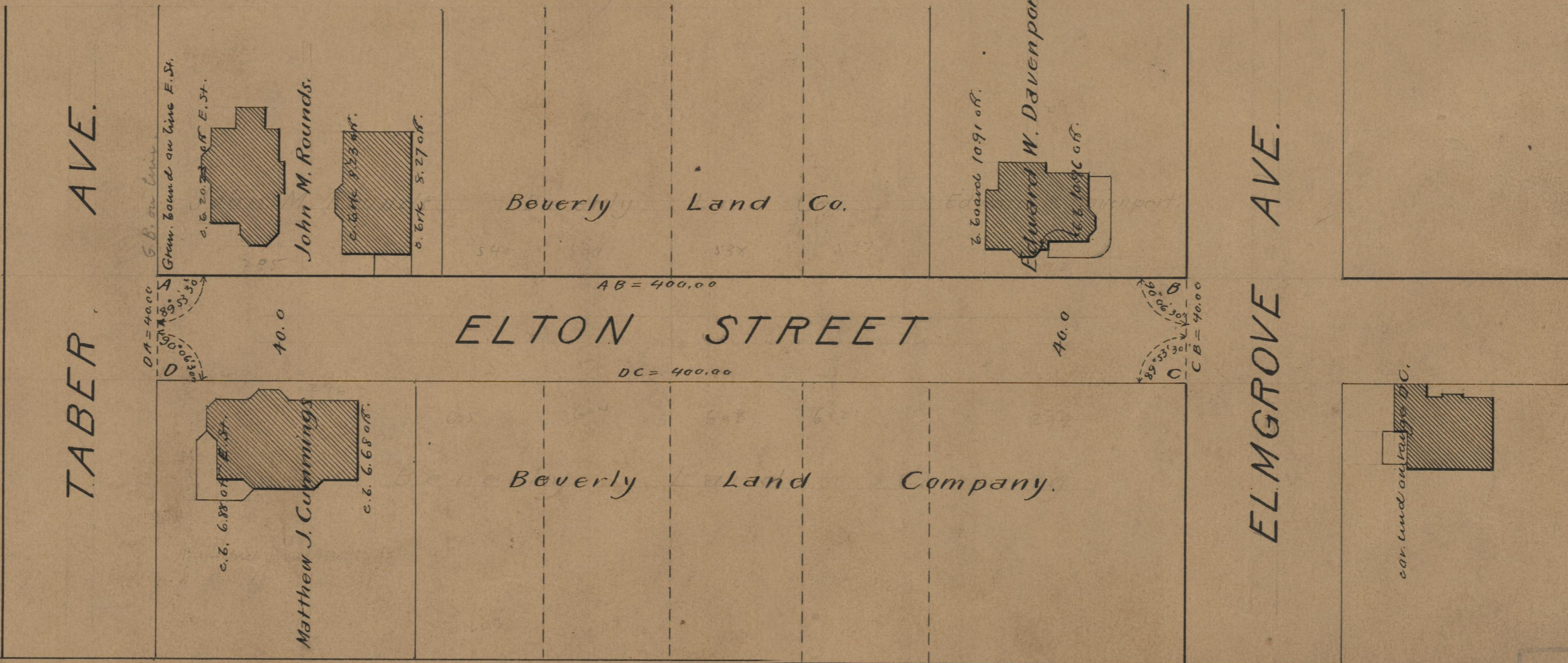
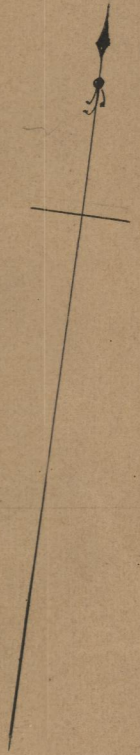
SCALE 50 FEET PER INCH.
DECLARED A PUBLIC HIGHWAY
BY RESOLUTION OF THE
BOARD OF ALDERMEN

September 3, 1903.

400.0

Witness -----

City Clerk.



75
B-38