

PROVIDENCE, R.I.
CITY ENGINEER'S OFFICE
STREET LINE DEPT.

Sept. 15, 1903
031744.

PLAT OF ALGONQUIN STREET

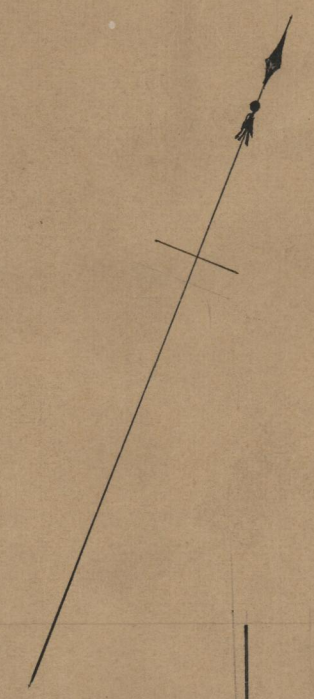
FROM HOLMES ST. TO CRESCENT ST.

SCALE 60 FEET PER INCH.

656.86 ✓
656.71 ✓
2 / 1313.57
656.78 ✓

706.72

1.19.20 0.23.28
11.59.00
656.71
657.86



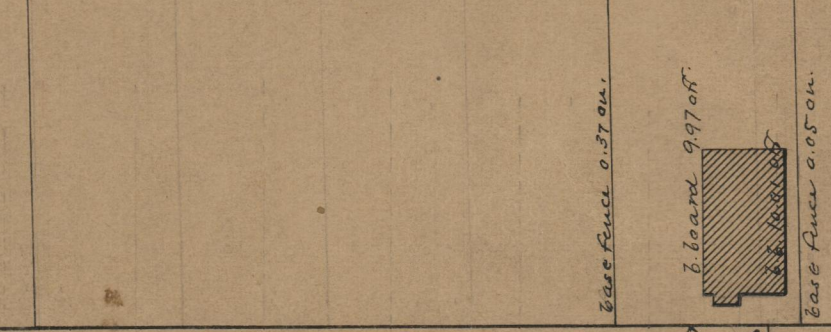
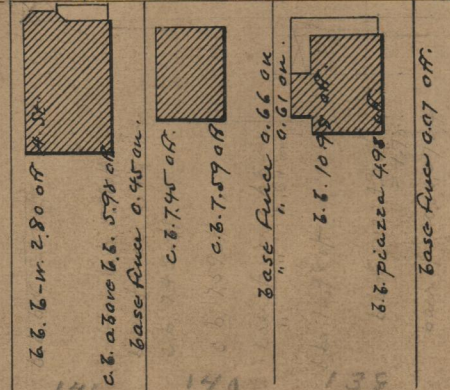
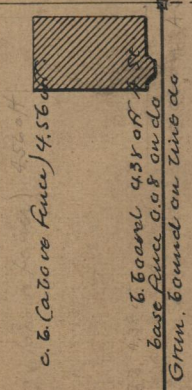
ST.

CRESCENT

ALGONQUIN STREET

SIBLEY ST.

HOLMES ST.
HUMES ST.



BA = 657.86

CD = 656.71

Edwin M. Snow heirs

Base fence 1.49 on A. St.

Annie R. Case wife of John E.

Samuel M. Gray