

PROVIDENCE, R.I.
CITY ENGINEER'S OFFICE
STREET LINE DEPT.
June 23, 1903.

031616

Note, The limits of the area declared a public highway are indicated by the letters A B C D.

The lines are intended to conform to the deed recorded in Deed Book 434, on page 71, in the office of the Recorder of Deeds.

PLAT OF TROOP LANE

FROM WALLING ST. TO CHARLES ST.

SCALE 30 FEET PER INCH.

DECLARED A PUBLIC HIGHWAY

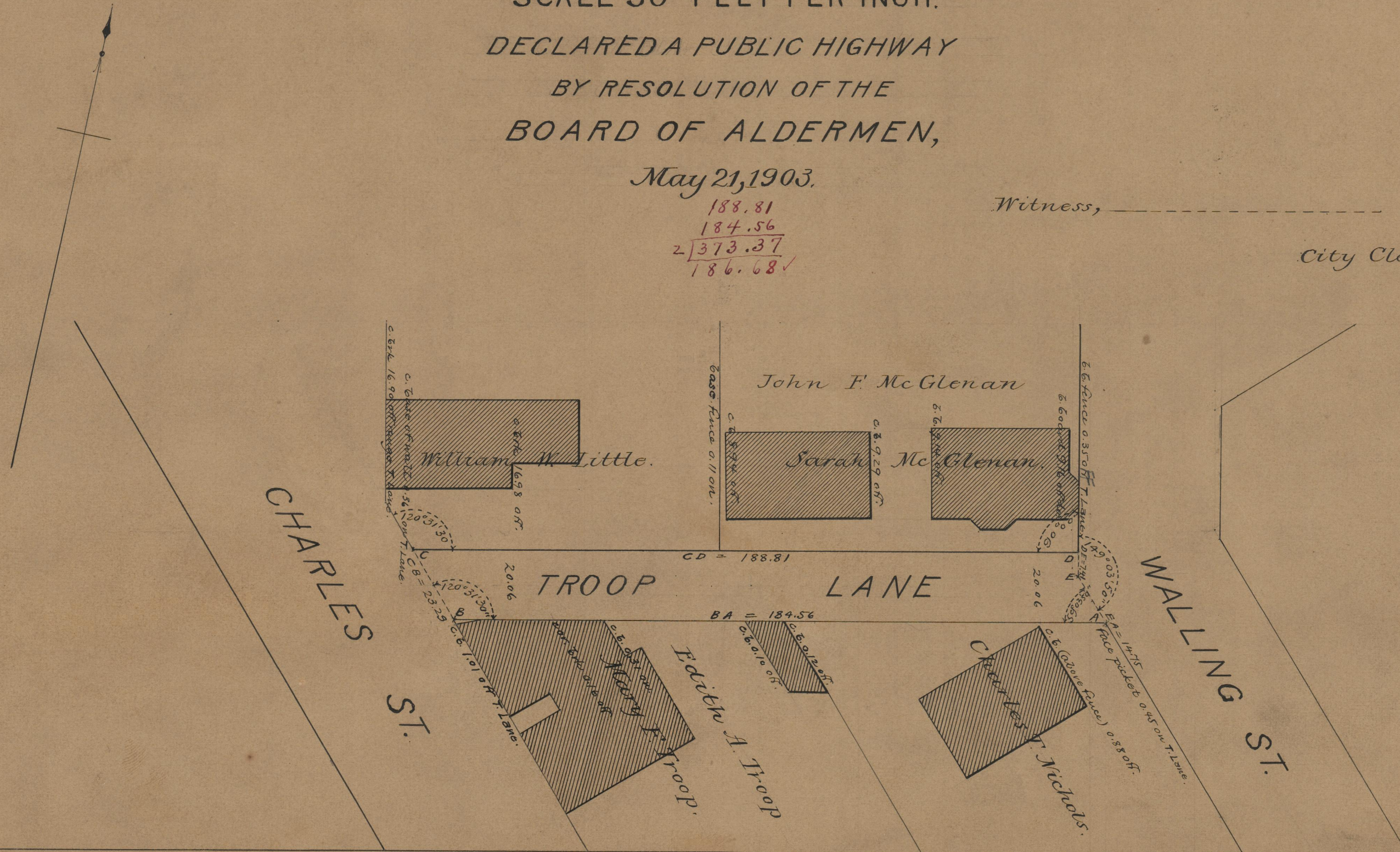
BY RESOLUTION OF THE

BOARD OF ALDERMEN,

May 21, 1903.

188.81
184.56
2) 373.37
186.68 ✓

Witness, _____
City Clerk.



OFFICE No. 15080
DRAWER " 75
SHEET " B-35