

PROVIDENCE, R.I.
CITY ENGINEER'S OFFICE
STREET LINE DEPT.
May 7, 1903.
031542

Note, The limits of the area declared a public highway are indicated by the letters ABCD.

The lines are intended to conform with the deed in Deed Book 455, on page 174, in the office of the Recorder of Deeds

PLAT OF ALUMNI AVENUE

FROM WEYMOUTH ST. TO ARLINGTON AVE.

SCALE 50 FEET PER INCH.

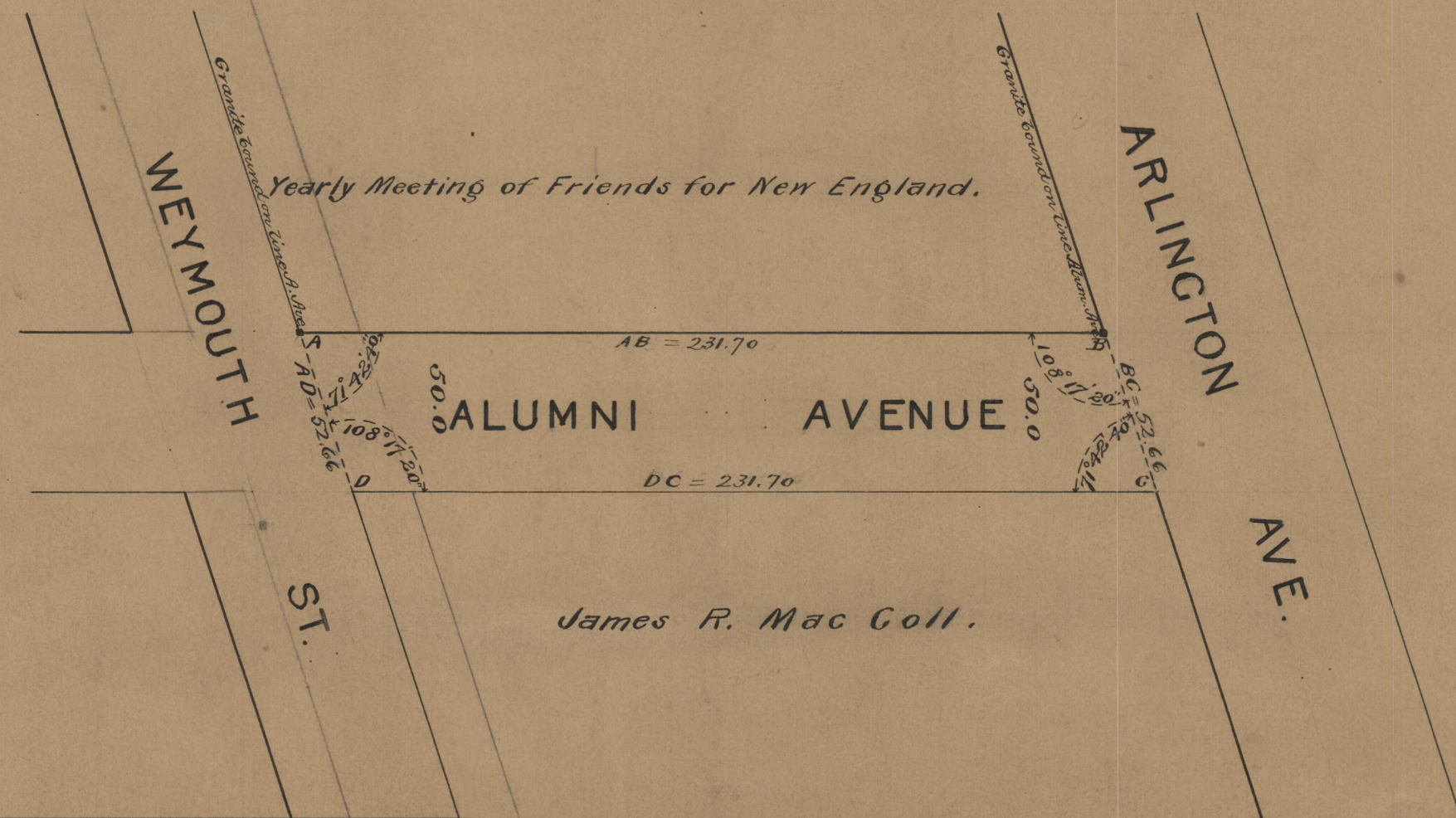
DECLARED A PUBLIC HIGHWAY
BY RESOLUTION OF THE
BOARD OF ALDERMEN

April 2, 1903.

231.70 ✓

Witness, -----

City Clerk.



75
B-34

OFFICE No.	15065
DRAWER	75
SHEET	B-34