

PROVIDENCE, R.I.
CITY ENGINEER'S OFFICE

STREET LINE DEPT.

May 7, 1903.

031540

Note, The limits of the area declared a public highway are indicated by the letters A B C D.
The lines are intended to conform with the deed in Deed Book 448 on page 340, in the office of the Recorder of Deeds.

PLAT OF WEYMOUTH STREET FROM LLOYDAVE. TO OLNEY ST. SCALE 80 FEET PER INCH.

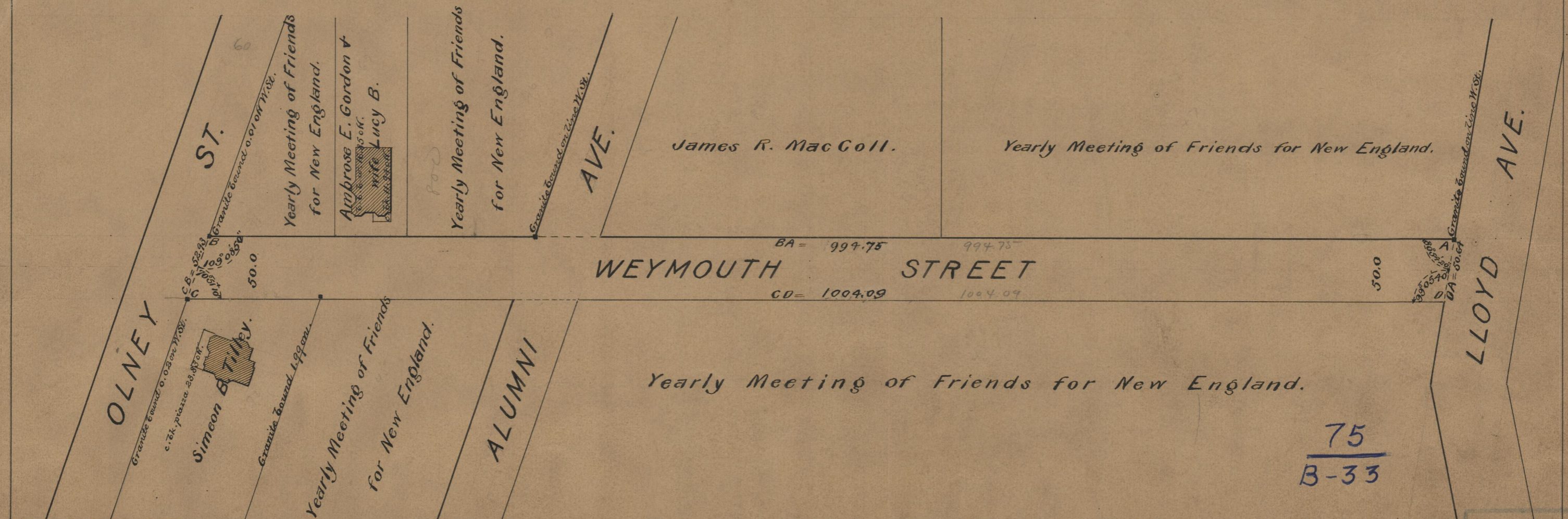
DECLARED A PUBLIC HIGHWAY
BY RESOLUTION OF THE
BOARD OF ALDERMEN

April 2, 1903.

994.75
1004.09
= 1998.84
999.42 ✓

Witness, -----

City Clerk.



75
A37

75
B-33

OFFICE No. 15064
DRAWER 75
SHEET B-33