

PROVIDENCE, R.I.  
CITY ENGINEER'S OFFICE  
STREET LINE DEPT.  
May 7, 1903.  
031537

Note. The limits of the area declared a public highway are indicated by the letters ABCDEF.  
The lines are intended to conform to the deed in Deed Book 17, on page 234 North Providence Records (City Clerk's Office, Pawtucket).

# PLAT OF SILVER SPRING STREET

FROM ASHTON ST. TO NORTHUP AVE.

IN TWO SHEETS

SCALE 50 FEET PER INCH.

DECLARED A PUBLIC HIGHWAY

BY RESOLUTION OF THE

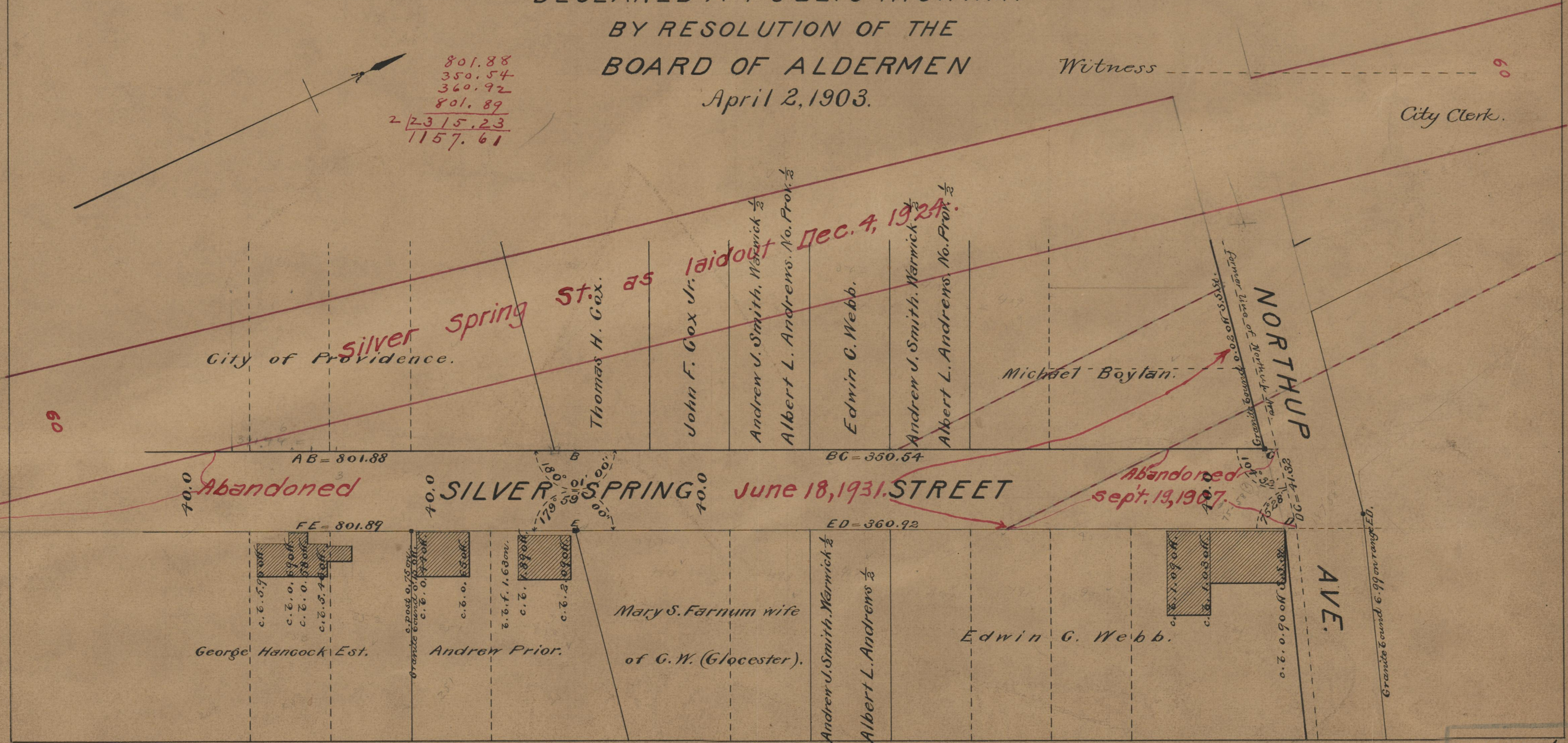
BOARD OF ALDERMEN

April 2, 1903.

Witness

City Clerk.

801.88  
350.54  
360.92  
801.89  
2 2315.23  
1157.61



75  
B-32

75  
B-32

OFFICE No. 15063  
DRAWER 75  
SHEET 3-2