

PROVIDENCE, R.I.
CITY ENGINEER'S OFFICE
STREET LINE DEPT.
May 7, 1903.

031536

PLAT OF SILVER SPRING STREET

FROM ASHTON ST. TO NORTHUP AVE.

IN TWO SHEETS

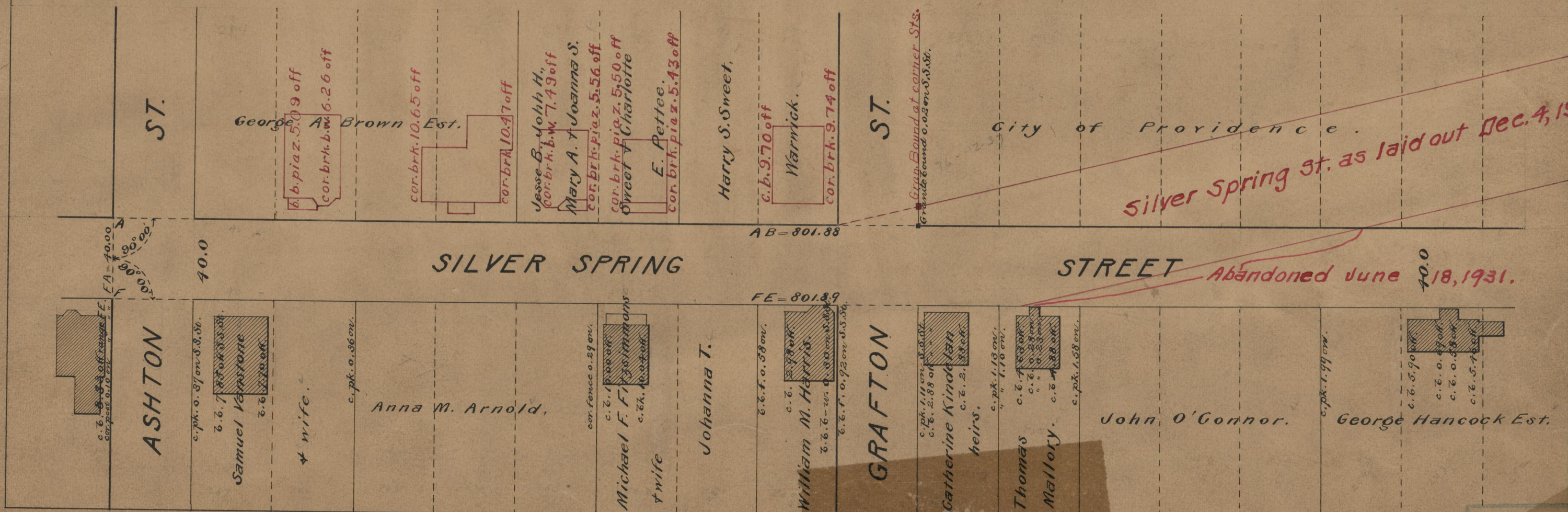
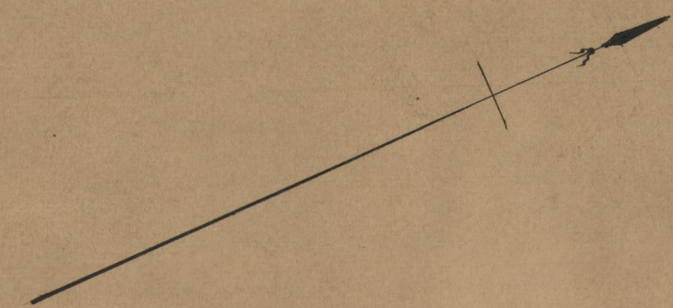
SCALE 50 FEET PER INCH.

DECLARED A PUBLIC HIGHWAY
BY RESOLUTION OF THE
BOARD OF ALDERMEN
April 2, 1903.

Witness, -----

City Clerk.

Note, The limits of the area declared a public highway are indicated by the letters ABCDEF.
The lines are intended to conform to the deed in Deed Book 17, page 234, North Providence Records (City Clerk's office, Pawtucket).



Silver Spring St. as laid out Dec. 4, 1924.

OFFICE No. 15062
DRAWN 75
B-31