

Providence R.I.
This plat accompanies
our report of this date.

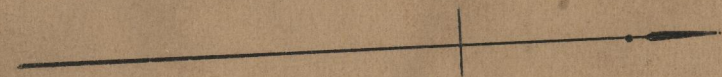
PROVIDENCE, R.I.
CITY ENGINEER'S OFFICE
STREET LINE DEPT.
Mar. 6, 1903
031405

PLAT OF
A NEW STREET
FROM NORTHUP AVE. TO SMITHFIELD AVE.
IN TWO SHEETS.

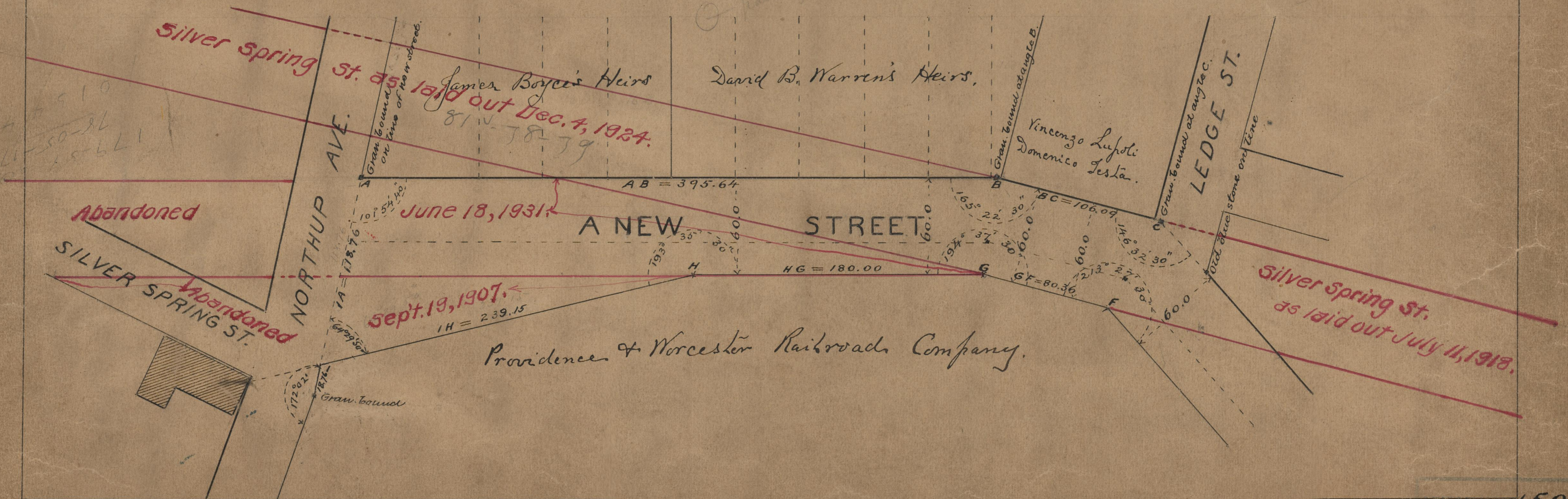
SCALE 60 FEET PER INCH.

Named Silver Spring St. by
Board of Aldermen Apr. 5, 1906.
See 71^A19

395.64
106.09
830.55
814.14
80.36
180.00
239.15
2 | 2645.93
1322.96



Part of the main object



510
50-36
15641

221.22
49.64
180.00
229.96
239.15
19

OFFICE NO. 15040
DRAWER 75
SHEET B-25