

PROVIDENCE, R.I.
CITY ENGINEER'S OFFICE

STREET LINE DEPT.

Jan. 17, 1903.

031358

Note, The limits of the area declared a public highway are indicated by the letters ABCDE.
The lines conform to deeds in deed books 365, page 270, and 387, page 458, in the office of the Recorder of Deeds.

PLAT OF WAYLAND AVENUE

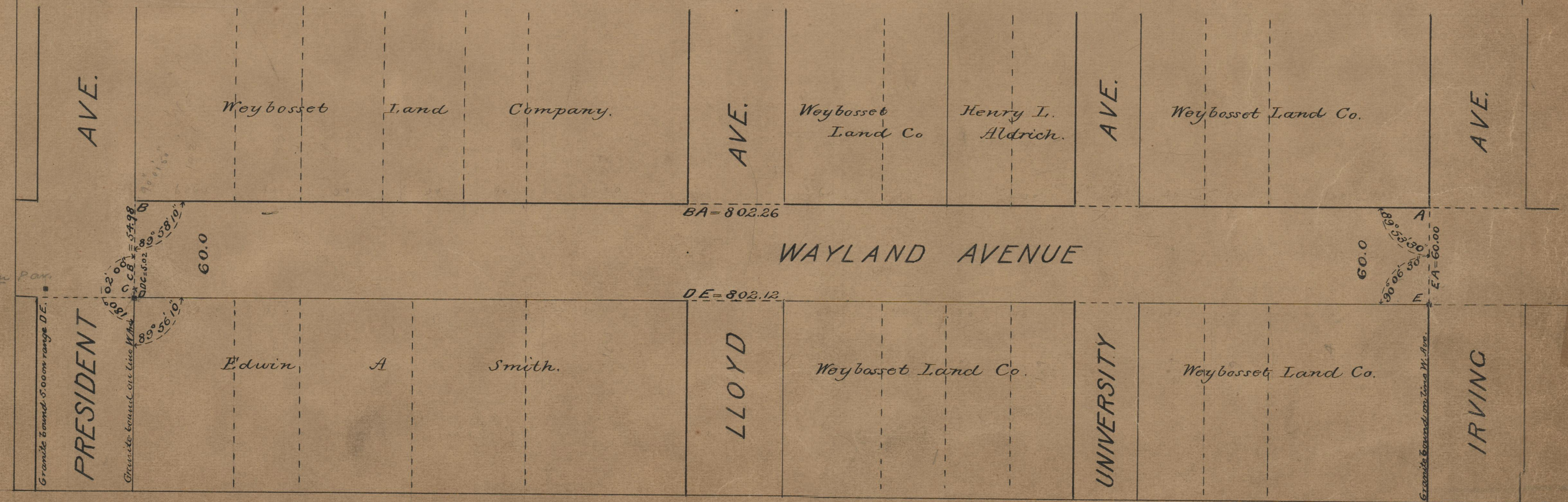
FROM IRVING AVE. TO PRESIDENT AVE.
SCALE 60 FEET PER INCH.

DECLARED A PUBLIC HIGHWAY,
BY RESOLUTION OF THE
BOARD OF ALDERMEN,
November 20, 1902.

Witness, _____

City Clerk.

802.26
802.12
2/1604.38
802.19



G.B. 530 on P.A.V.

60.0
A
E
EA=60.00
90°06'30"
88°02'30"

Granite bound on Tara W. Ave.

12775
75
3/24
12-24