

PROVIDENCE, R.I.  
CITY ENGINEER'S OFFICE  
STREET LINE DEPT.  
Jan. 17, 1903.  
031356

Note, The limits of the area declared a public highway are indicated by the letters A, B, C and D.  
The lines conform to deeds in deed books 365, page 270, and 449, page 47, in the office of the Recorder of Deeds.

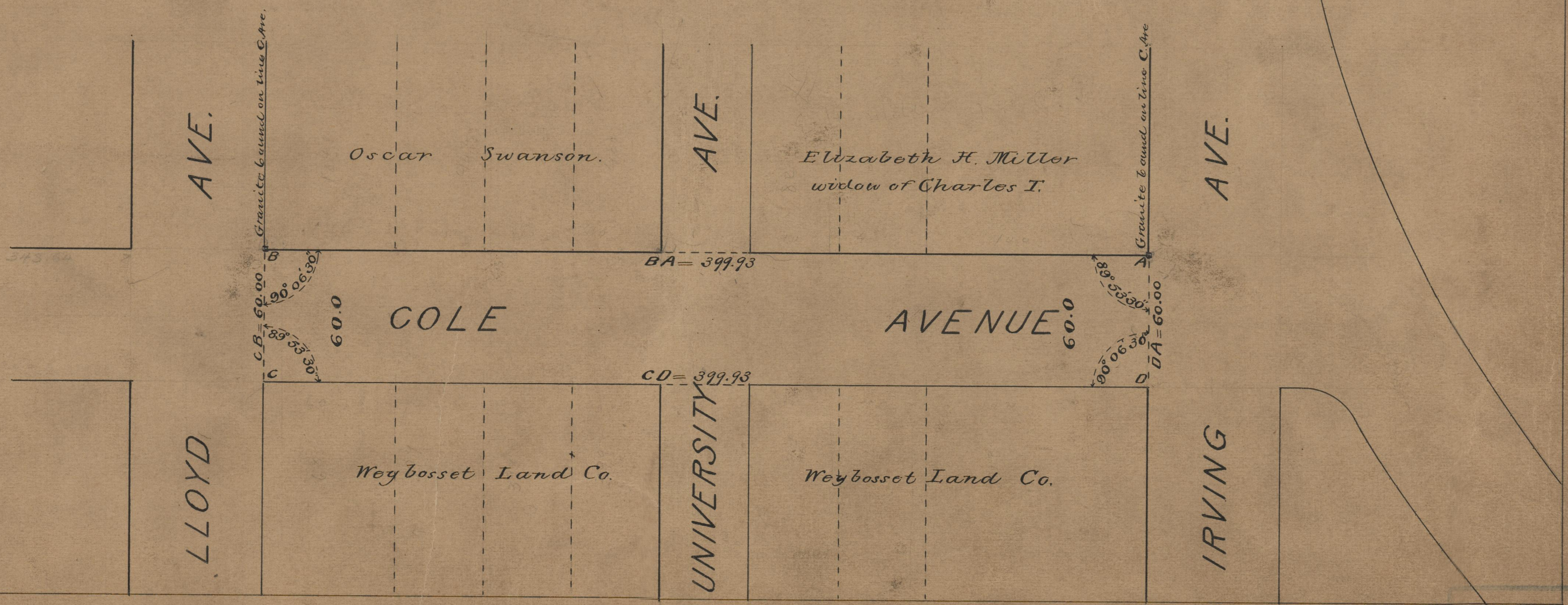
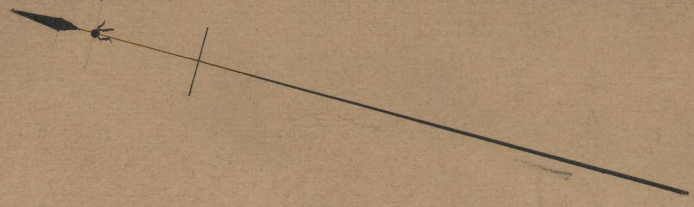
PLAT OF  
**COLE AVENUE**  
FROM IRVING AVE. TO LLOYD AVE.  
SCALE 50 FEET PER INCH.

DECLARED A PUBLIC HIGHWAY,  
BY RESOLUTION OF THE  
BOARD OF ALDERMEN,  
November 20, 1902.

399.93

Witness, -----

City Clerk.



OFFICE No. 12774  
DRAWER 75  
SHEET B-23