

PROVIDENCE, R.I.
CITY ENGINEER'S OFFICE
STREET LINE DEPT.
Sept. 23, 1902.
031182

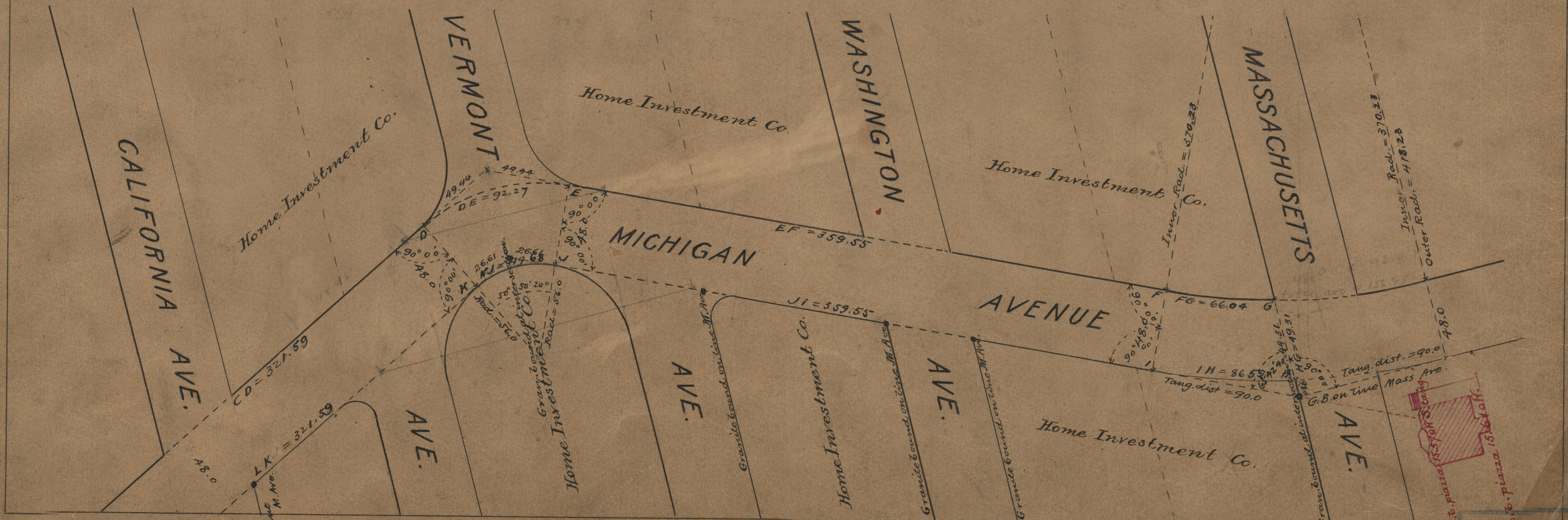
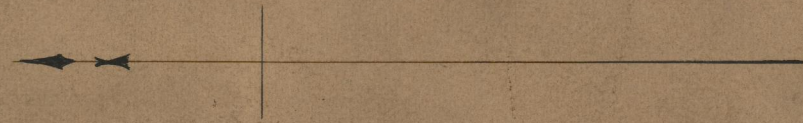
Note,
The limits of the area declared a public
highway are indicated by the letters ABCDEFGHIJKLMN
The lines fixed conform to the deed in
Deed Book 433 at page 445 in the office
of the Recorder of Deeds.

PLAT OF
MICHIGAN AVENUE
FROM NEW YORK AVE. TO MASSACHUSETTS AVE
IN TWO SHEETS
SCALE 60 FEET PER INCH.
DECLARED A PUBLIC HIGHWAY
BY RESOLUTION OF THE
BOARD OF ALDERMEN.

July 3, 1902.

Witness, _____

Red notes added Dec. 1903.



Handwritten notes and numbers in the right margin:
157-42-59
24-17-20
7152794
0891541
37428
217172
24
17
20

75
B-21
OFFICE NO. 14969
DRAWN 75
B-2