

PROVIDENCE, R.I.  
CITY ENGINEER'S OFFICE  
STREET LINE DEPT.  
Sept. 23, 1902.  
031181

Note

The limits of the area declared a public highway are indicated by the letters A B C D E F G H I J K L M N.  
The lines fixed conform to the deeds in Deed Books 433, page 445, and 434, page 459, in the office of the Recorder of Deeds.

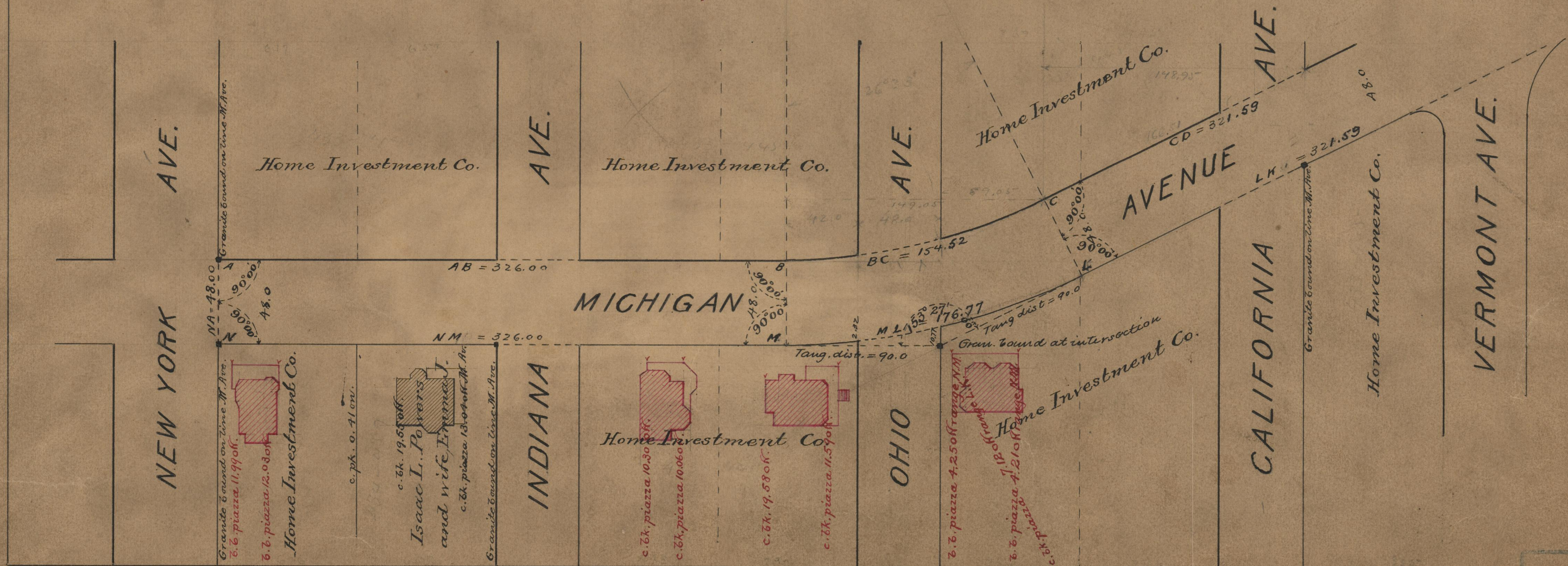
PLAT OF  
**MICHIGAN AVENUE**  
FROM NEW YORK AVE. TO MASSACHUSETTS AVE.  
IN TWO SHEETS,  
SCALE 60 FEET PER INCH.  
DECLARED A PUBLIC HIGHWAY  
BY RESOLUTION OF THE  
BOARD OF ALDERMEN

July 3, 1902.

Witness, \_\_\_\_\_

Offsets in red taken Dec. 1909.

326.00	326.00
157.52	176.77
321.59	321.59
92.27	79.64
359.55	359.55
66.07	86.59
1319.97	1820.18
1326.18	
22640.15	
1320.07	



75  
B20

OFFICE No. 14968  
DRAWER " 75  
B-3