

Note,  
The limits of the area declared a public highway are indicated by the letters A B C D.  
The lines fixed conform to the deeds in Deed books 433, page 445, 437, page 147 and 443, page 7, in the office of the Recorder of Deeds.

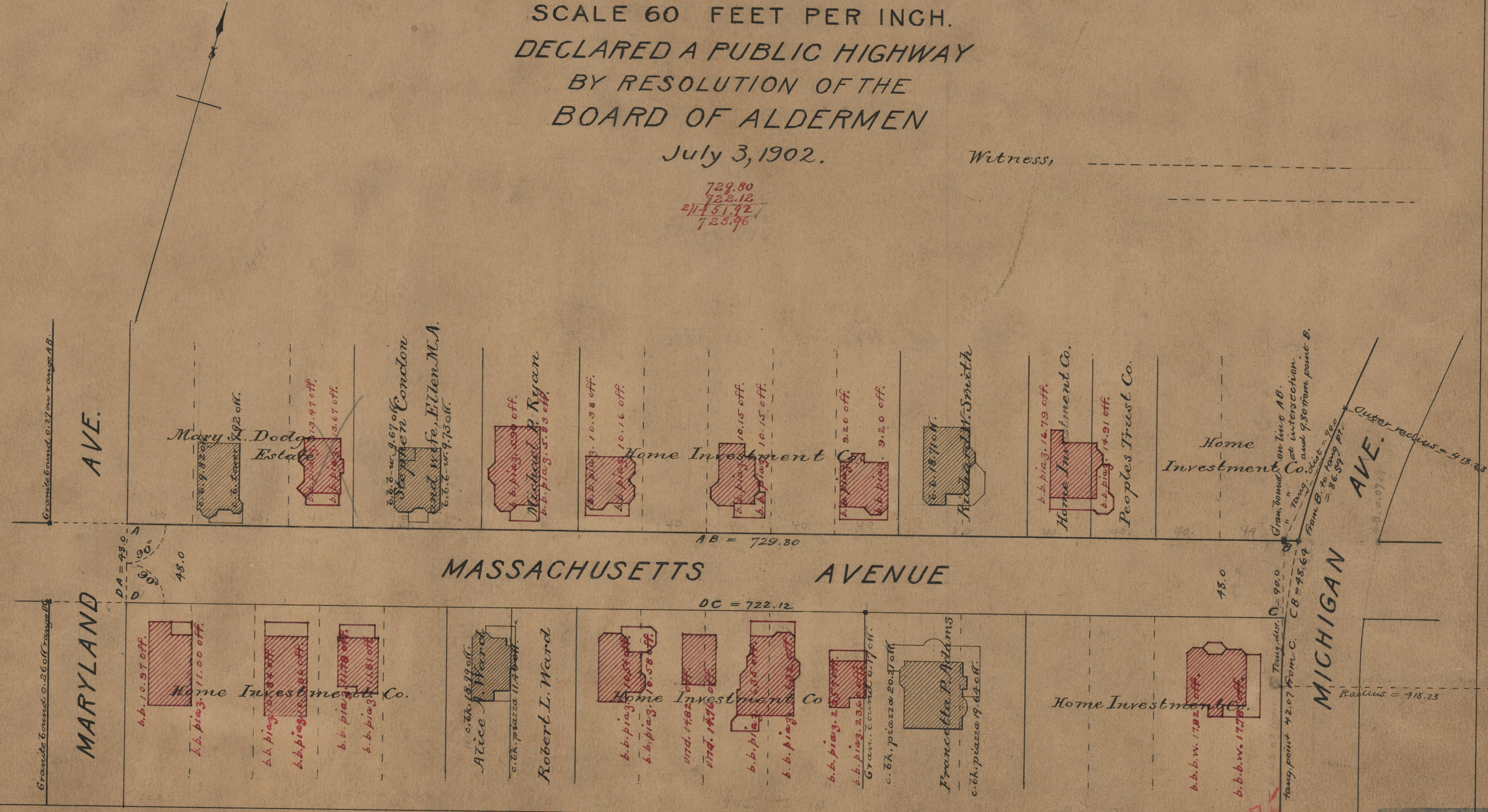
# PLAT OF MASSACHUSETTS AVENUE FROM MARYLAND AVE. TO MICHIGAN AVE.

PROVIDENCE, R.I.  
CITY ENGINEER'S OFFICE  
STREET LINE DEPT.  
Sept. 23, 1902.  
031179

SCALE 60 FEET PER INCH.  
DECLARED A PUBLIC HIGHWAY  
BY RESOLUTION OF THE  
BOARD OF ALDERMEN  
July 3, 1902.

Witness, \_\_\_\_\_

729.80  
722.12  
211-51.92  
725.96



OFFICE No. 1496;  
DRAWER " 75  
SHEET " 3-19