

PROVIDENCE, R.I.
CITY ENGINEER'S OFFICE

STREET LINE DEPT.

Sept. 23, 1902.

031177

Note.

The limits of the area declared a public highway are indicated by the letters ABCD.

The lines fixed conform to the deeds in Deed Books 433, page 445, and 448, page 224 in the office of the Recorder of Deeds.

PLAT OF WASHINGTON AVENUE FROM MARYLAND AVE. TO MICHIGAN AVE.

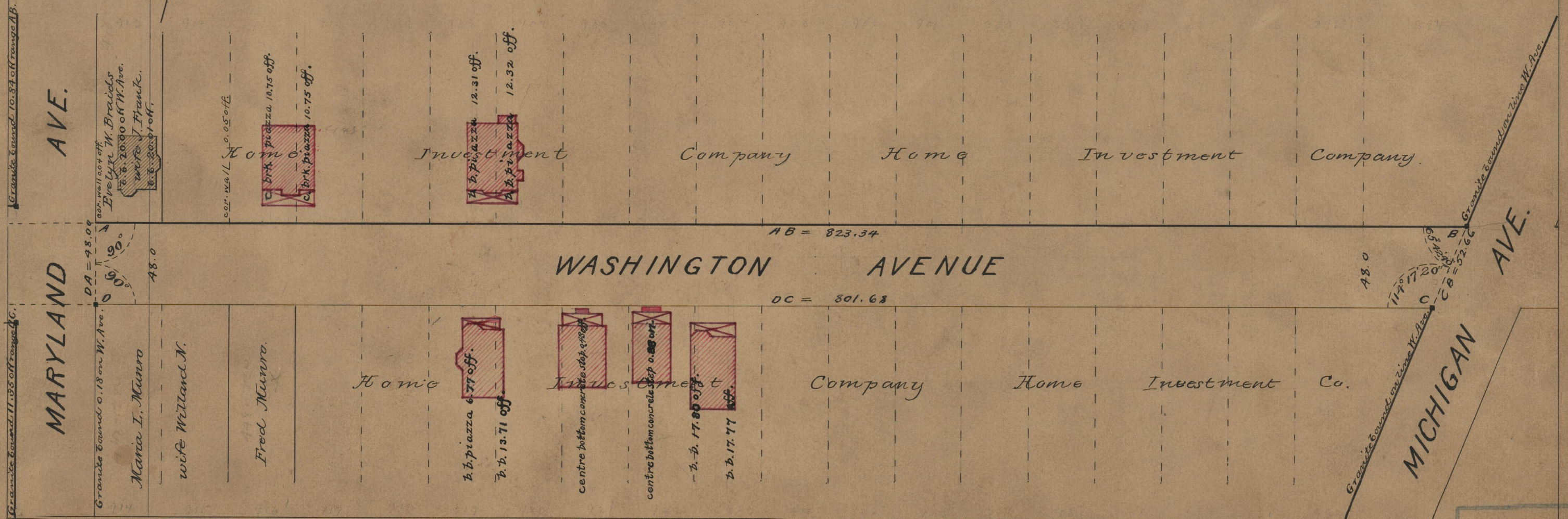
SCALE 60 FEET PER INCH,
DECLARED A PUBLIC HIGHWAY
BY RESOLUTION OF THE
BOARD OF ALDERMEN.

July 3, 1902.

Witness, _____

City Clerk

823.34
801.68
21625.027
812.51



OFFICE No. 14966
DRAWER " 75
SHEET B-18