

PROVIDENCE, R.I.
CITY ENGINEER'S OFFICE
STREET LINE DEPT.
Sept. 23, 1902.
031175

Note
The limits of the area declared a public highway are indicated by the letters ABCD.
The lines fixed conform to the deeds in Deed Book 433, page 445, and 448, page 136, in the office of the Recorder of Deeds.

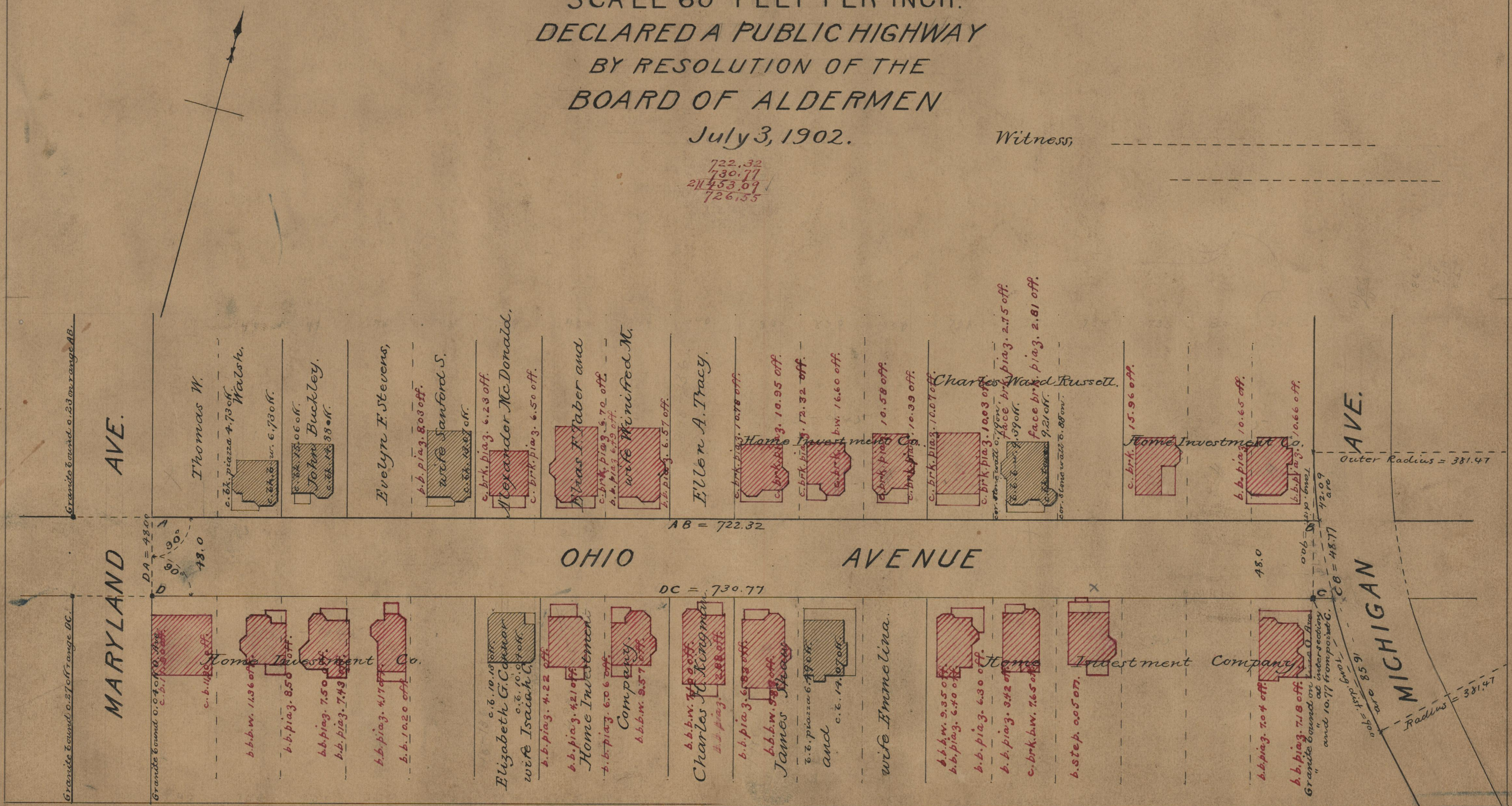
PLAT OF OHIO AVENUE FROM MARYLAND AVE. TO MICHIGAN AVE.

SCALE 60 FEET PER INCH.
DECLARED A PUBLIC HIGHWAY
BY RESOLUTION OF THE
BOARD OF ALDERMEN

July 3, 1902.

Witness

722.32
730.77
211453.09
726155



OFFICE No. 14965
DRAWER 75

75
01-17