

PROVIDENCE, R.I.
CITY ENGINEER'S OFFICE

STREET LINE DEPT.

Sept. 23, 1902.

031173

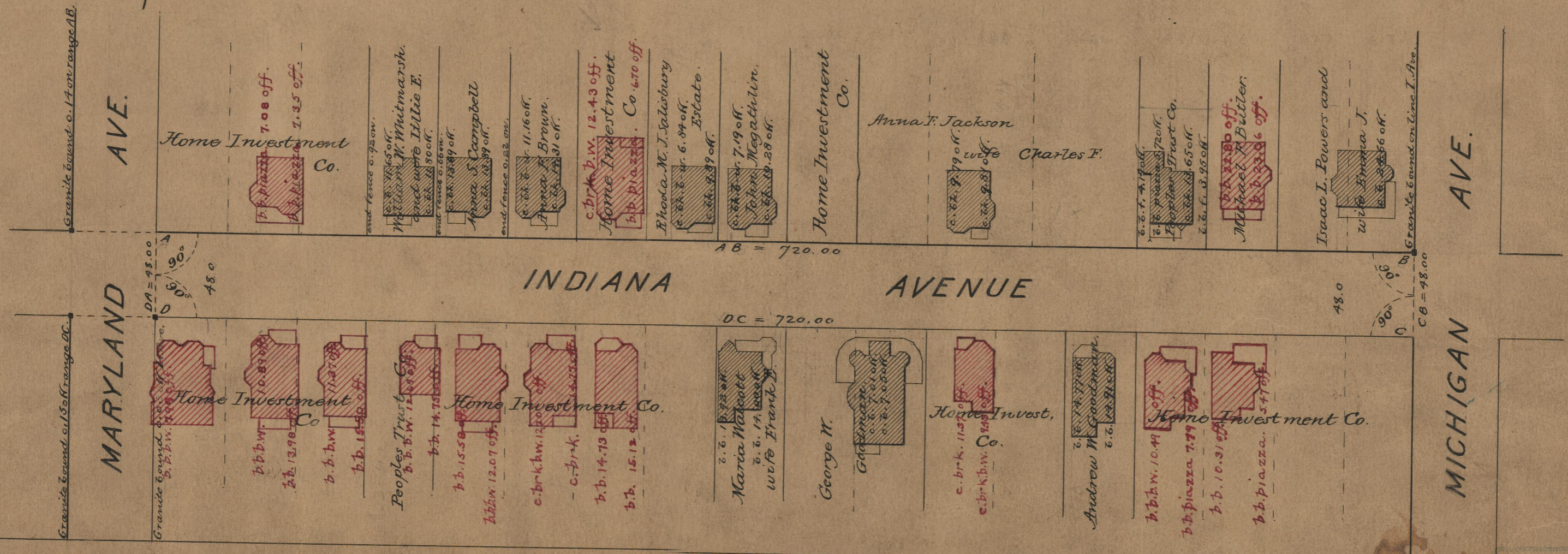
Note

The limits of the area declared a public highway are indicated by the letters A B C D.
The lines fixed conform to the deeds in Deed Books 433, page 445, and 448, page 163, in the office of the Recorder of Deeds.

PLAT OF INDIANA AVENUE FROM MARYLAND AVE. TO MICHIGAN AVE.

SCALE 60 FEET PER INCH.
DECLARED A PUBLIC HIGHWAY
BY RESOLUTION OF THE
BOARD OF ALDERMEN
July 3, 1902

Witness, _____
City Clerk



Granite bound 0.14 on range AB.

AVE.

Granite bound 0.15 on range DC.

MARYLAND

AVE.

MICHIGAN