

PROVIDENCE R.I.
CITY ENGINEER'S OFFICE
STREET LINE DEPT.
Sept. 23, 1902.

031171

Note
The limits of the area declared a public highway are indicated by the letters ABCD.
The lines fixed conform to the deeds in Deed Book 433 at pages 443 and 445 in the office of the Recorder of Deeds.

PLAT OF CALIFORNIA AVENUE

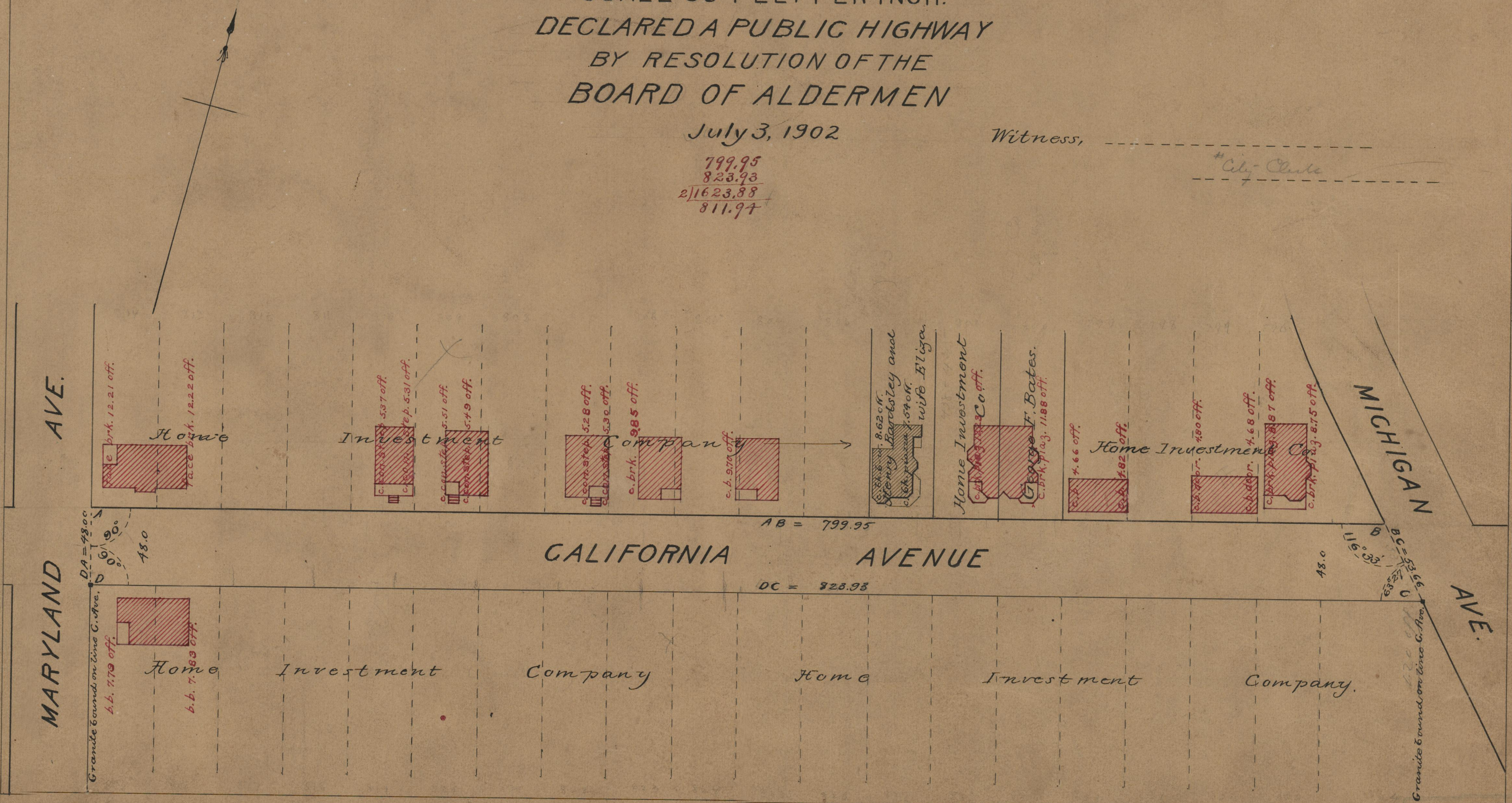
FROM MARYLAND AVE. TO MICHIGAN AVE.

SCALE 60 FEET PER INCH.
DECLARED A PUBLIC HIGHWAY
BY RESOLUTION OF THE
BOARD OF ALDERMEN

July 3, 1902

Witness, _____
City Clerk

799.95
828.93
2)1623.88
811.94



OFFICE No. 14963
DRAWER 75
SHEET B-15