

PROVIDENCE, R.I.
CITY ENGINEER'S OFFICE
STREET LINE DEPT.

Aug. 29, 1902
031142

Note; The area declared a public highway is indicated by the letters A, B, C, D. The lines conform to deed in Deed Book 59, page 496, Johnston Records.

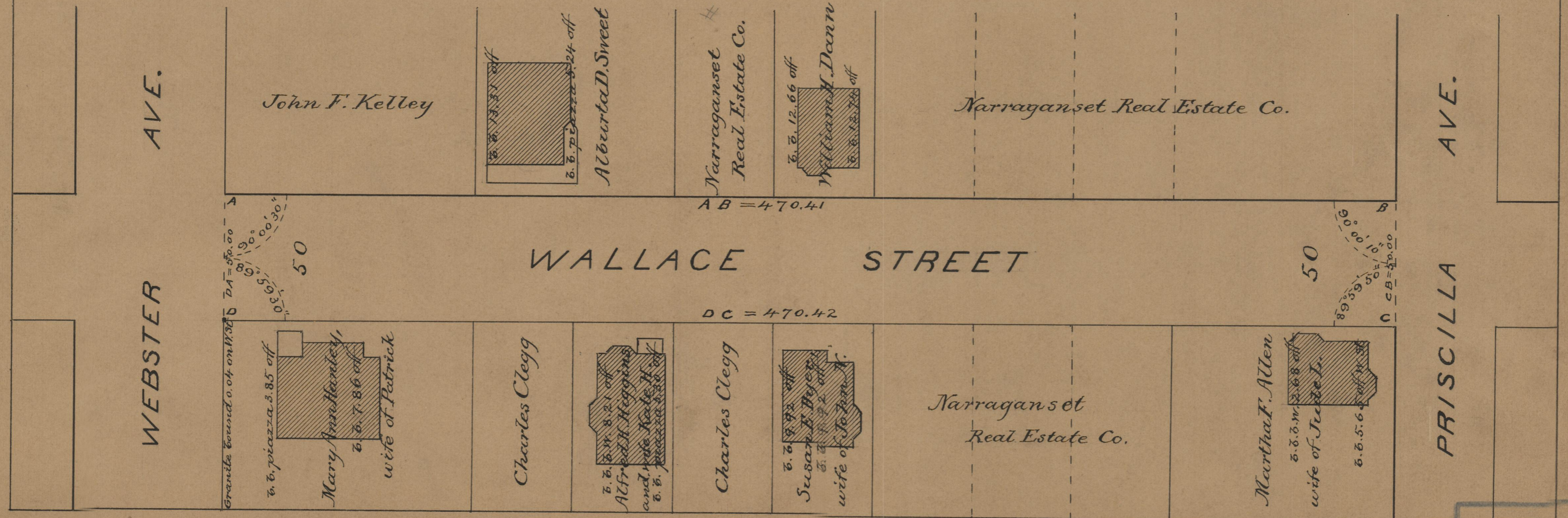
PLAT OF WALLACE STREET

FROM WEBSTER AVE. TO PRISCILLA AVE.

SCALE 40 FEET PER INCH.

DECLARED A PUBLIC HIGHWAY
BY RESOLUTION OF THE
BOARD OF ALDERMEN,
August 7, 1902.

Witness, _____
*City Clerk



OFFICE No. 14956
DRAWER 75
SHEET B-14